

Risk Profile
Mid & West Wales Fire Service

Station 61 – Llanelli



Contact Details:

Station Manager: Justin Lewis
Station Liaison: Steve Richards

Address:
Llanelli Fire Station
Corporation Avenue
Llanelli
Carmarthenshire
SA15 3PF
Telephone: 0370 6060699
Email: <mailto:mail@mawwfire.gov.uk>

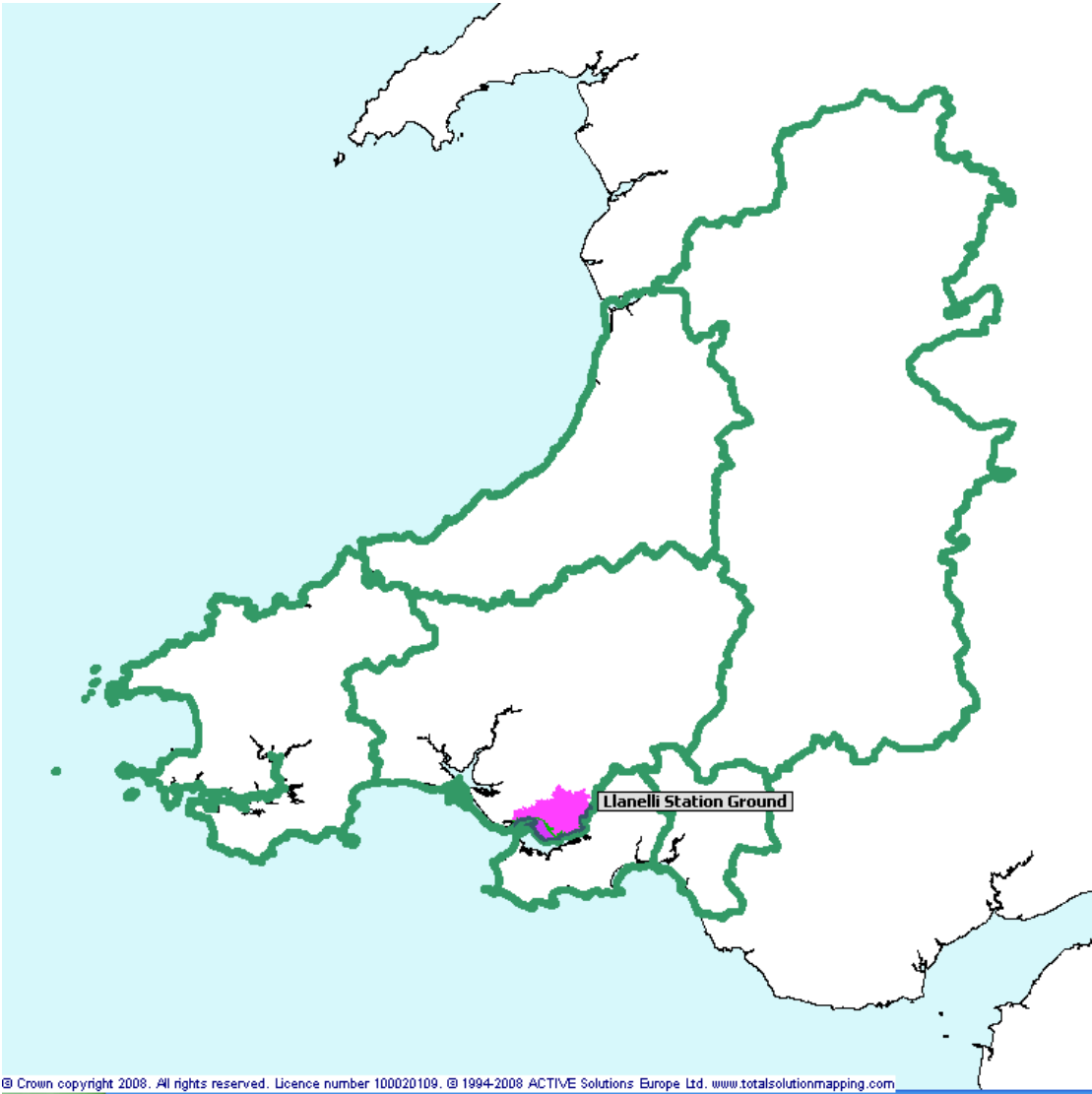
ALWAYS RING 999 IN AN EMERGENCY

The following report contains information about Llanelli Fire Station. This information will provide an overview of the area and show where we want carry out our community safety work. This will be updated each year.

General Information about the area

Map of Mid and West Wales Fire and Rescue Service. Llanelli fire station ground is highlighted.

Mid & West Wales Fire & Rescue Service



Statistics Llanelli station area:-

Population	Population of Carmarthenshire	Population of Mid and West Wales Fire and Rescue Service
54,495	180,700	875,900

Figures based on 2010 population estimates (www.stats-wales.gov.uk)

STATION OVERVIEW

CREWING ARRANGEMENTS

Llanelli fire station has a staff of 28 Wholetime firefighters operating 4 watches on a shift basis and 16 retained firefighters. Retained firefighters are part-time personnel who provide fire cover using an alerter system to ensure that all the station's appliances are available 24 hours each day.

APPLIANCE INFORMATION

Llanelli Fire Station has:

- A Rescue/Pumping appliance - this is equipped with an enhanced capability to deal with road traffic collisions and other entrapment situations.
- A Water Ladder - this is a standard fire appliance.
- An Environment Response Unit - the primary role of the appliance is to prevent environmental damage and to assist salvage operations at incidents.
- An Inflatable Boat – This boat may be used to assist with evacuations at large scale flooding incidents
- A four-wheel drive (off road) vehicle.

LOCATION

Llanelli Fire Station was opened in 1958 and was totally refurbished during 2007 / 2008, making certain areas available for use by community groups. The station is located in Corporation Avenue which is a residential area of the town. The station provides emergency cover and community safety support to all communities within Llanelli and also the surrounding towns and villages of Burry Port and Llangennech.

RISKS

Being a large industrial town, Llanelli has a wide range of risks such as:

- Heavy Industrial - Corus Works (Trostre), Calsonic (Felinfoel) and Huntsman Bynea M4 Motorway.
- Large retail complexes within the town such as Elli, Trostre and Pemberton.
- A new sports stadium, Parc Y Scarlets.
- Estuaries and Marshland of Llangennech, Bynea, North Dock and Burry Port
- Numerous large residential communities.

KEY WORK ACTIVITIES

1. Undertaking Home Fire Safety Checks to provide safety advice to householders
2. Running arson reduction initiatives.
3. Training of personnel on appliances and equipment held on station.
4. Gathering information on high risk premises.
5. Reducing False Alarm calls.
6. Running Road Traffic Collision initiatives.
7. Working in partnership with various organisations including "Communities First" to develop "Safer Communities".
8. Developing staff into a more effective and efficient workforce.

PREVENTION

Local firefighters and community safety staff visit homes and carry out home fire safety checks, providing fire safety advice and where necessary supplying and installing smoke alarms free of charge. These checks are the cornerstone of the proactive role the Service is now adopting in its drive to reduce the deaths and injuries that are caused by accidental fires.

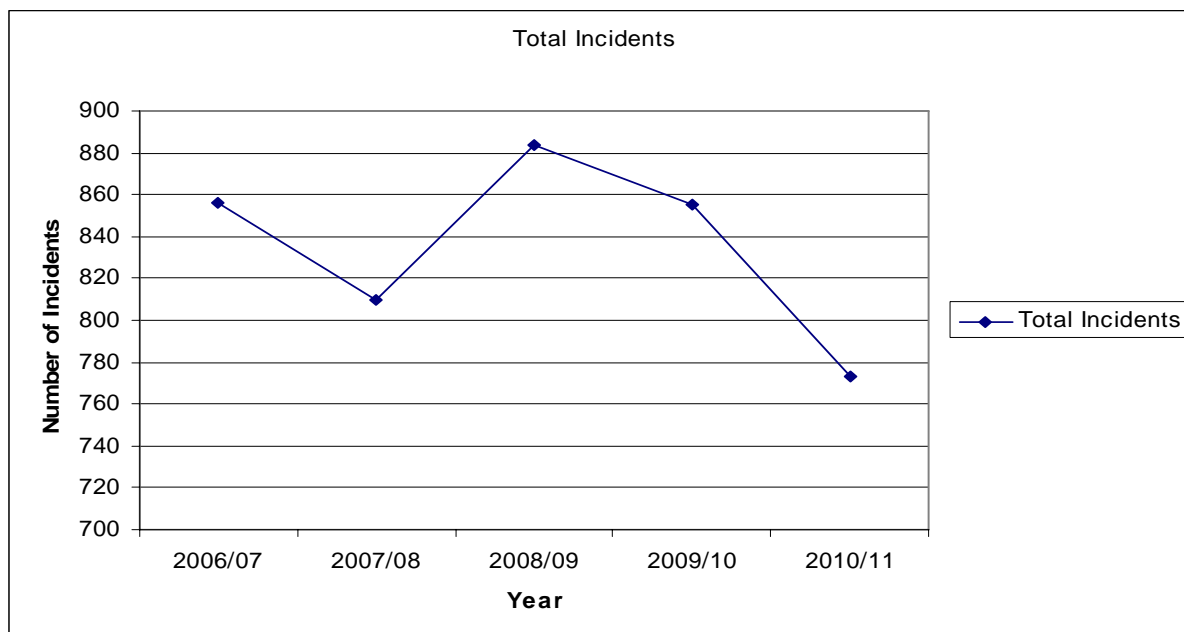
Llanelli Fire Station carry out approximately 1,900 Home Fire Safety Checks annually. Fires in the home are the main cause of fire deaths and injuries. The typical causes of fire in the home include

- Cookers left unattended
- Careless discarding of cigarettes
- Overloaded electrical sockets
- Children playing with matches
- Cooking after drinking alcohol

A home fire safety check takes about an hour to complete and is generally carried out by two Fire Service representatives. Getting a smoke alarm, regularly testing and maintaining it, as well as planning an escape route in the event of a fire can dramatically decrease the risk of death or serious injury. You can request a home fire safety check for yourself or a dependant relative by contacting the Service on 0800 169 1234 or by sending an e-mail request to your local Fire Service office via an online form from www.mawwfire.gov.uk.

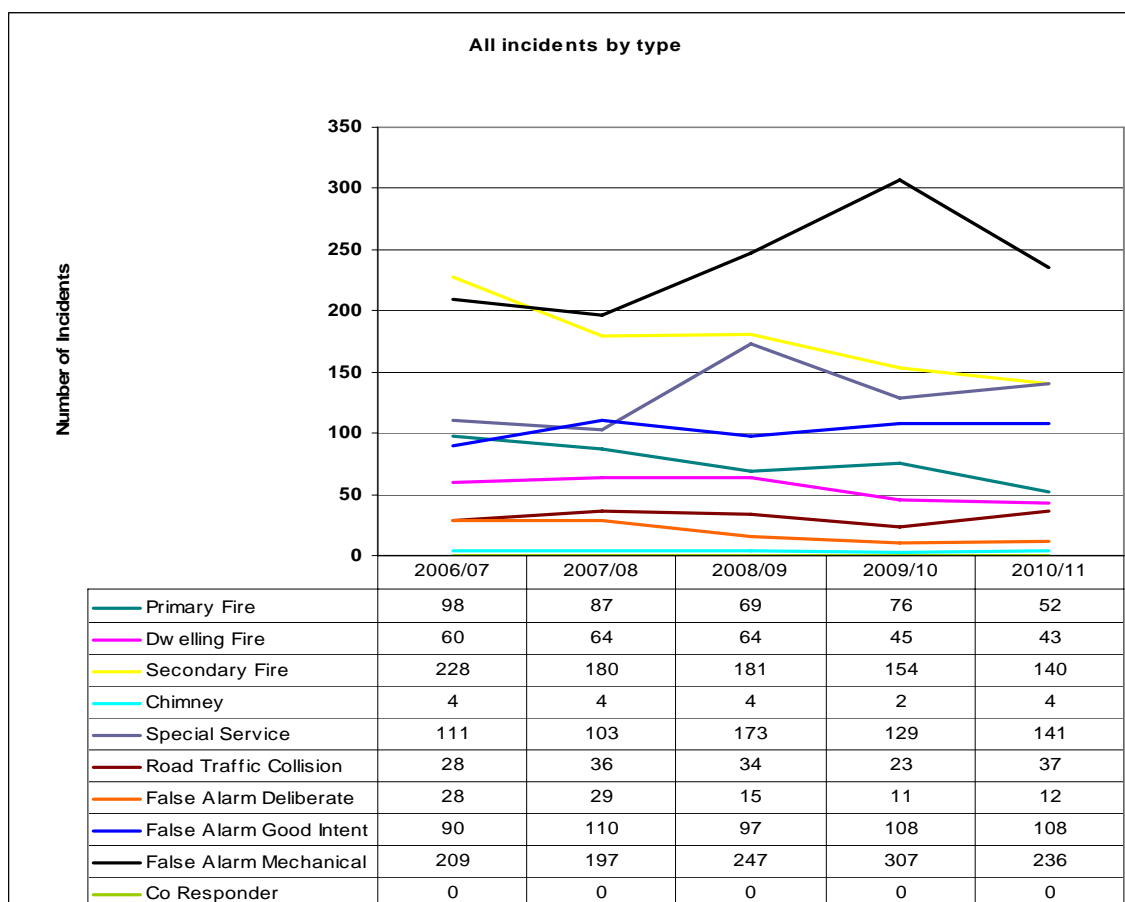
Specific Details about incidents

The following graph shows the trend in the total number of all incidents within Llanelli station ground over the five years (1st April 2006 -31st March 2011).



(Source: PC stats)

The following line graph shows the trend in different types of incidents* for the station ground for the last five years (1st April 2006 -31st March 2011).



(Source: PC stats)

* see appendix A for incident type definitions
Last updated 25/11/2011

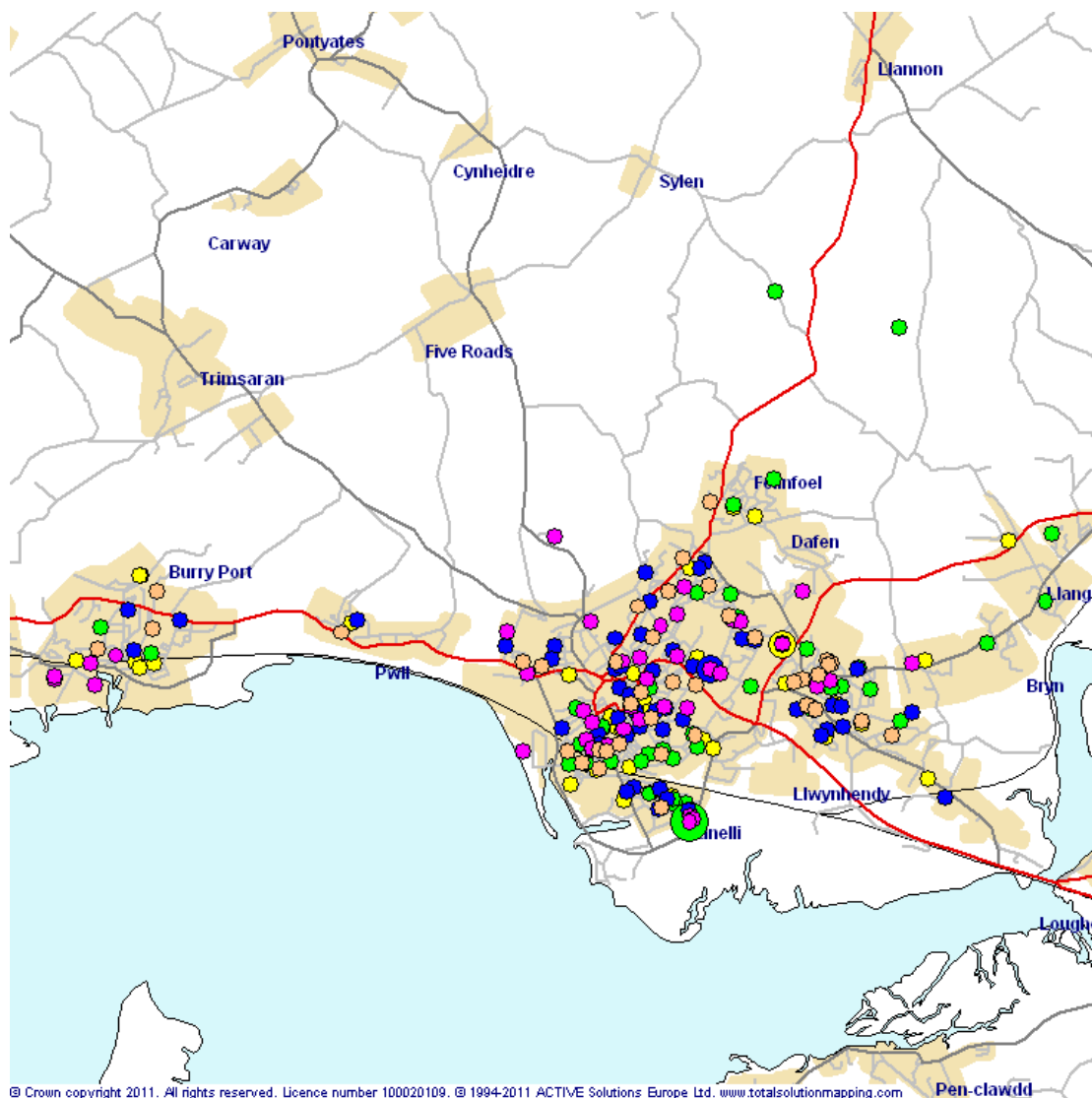
Incident Information – Accidental Dwelling Fires and Rescues, Casualties and Fatalities

The definition for the type of property recorded as dwelling is as follows:

- House of multiple occupancy
- Living accommodation (private, local authority & housing association)
- Sheltered Housing

The following map shows the number and location of accidental dwelling fires within Llanelli station ground over the last five years. Of the 237 fires, only 159 dwellings were known to have smoke alarms.

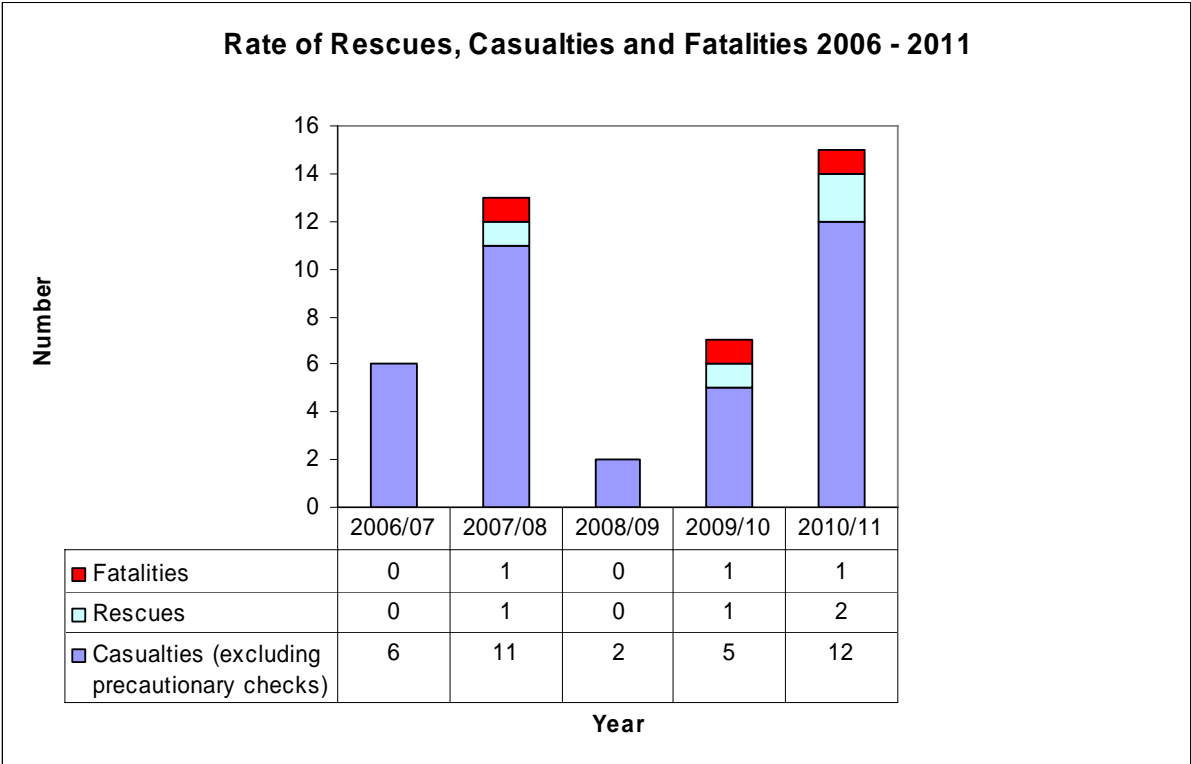
ACCIDENTAL DWELLING FIRES WITHIN LLANELLI STATION GROUND 2006 - 2011



Key	Count	Description
	49	01/04/2006-31/03/2007
	53	01/04/2007-31/03/2008
	56	01/04/2008-31/03/2009
	40	01/04/2009-31/03/2010
	39	01/04/2010-31/03/2011
	237	Total

(Source: PC stats)

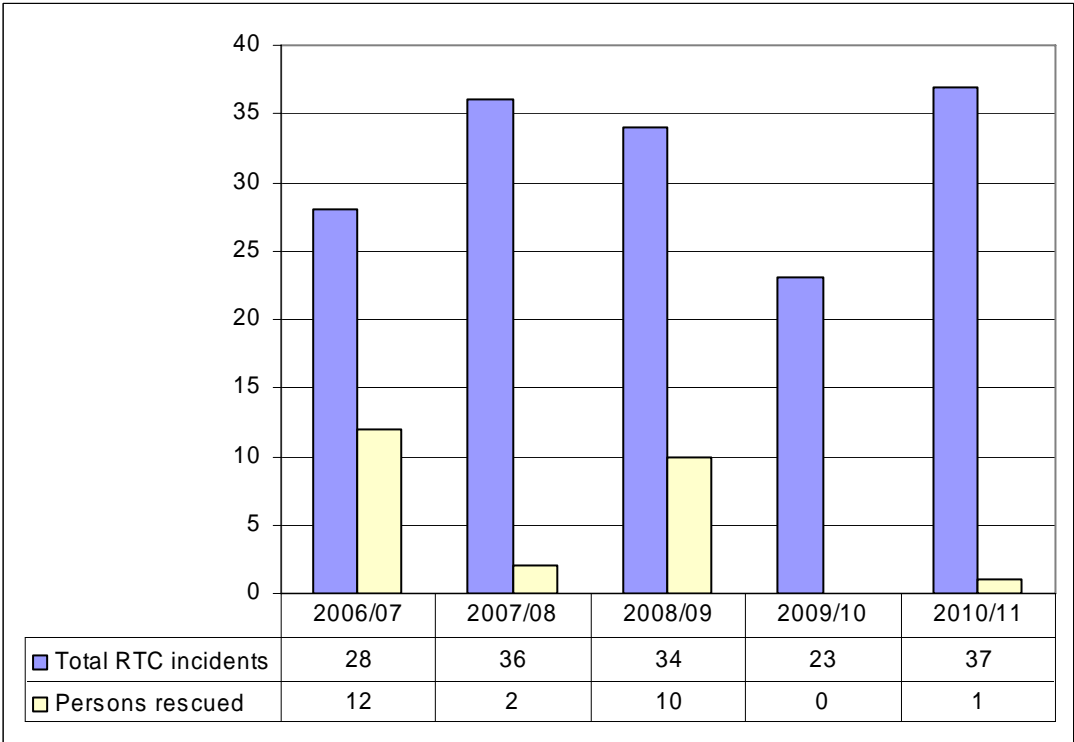
The graph below compares the rate of rescues, casualties and fatalities for accidental dwelling fires within Llanelli station ground. The figures are based on data from the last 5 years.



(Source: PC stats)

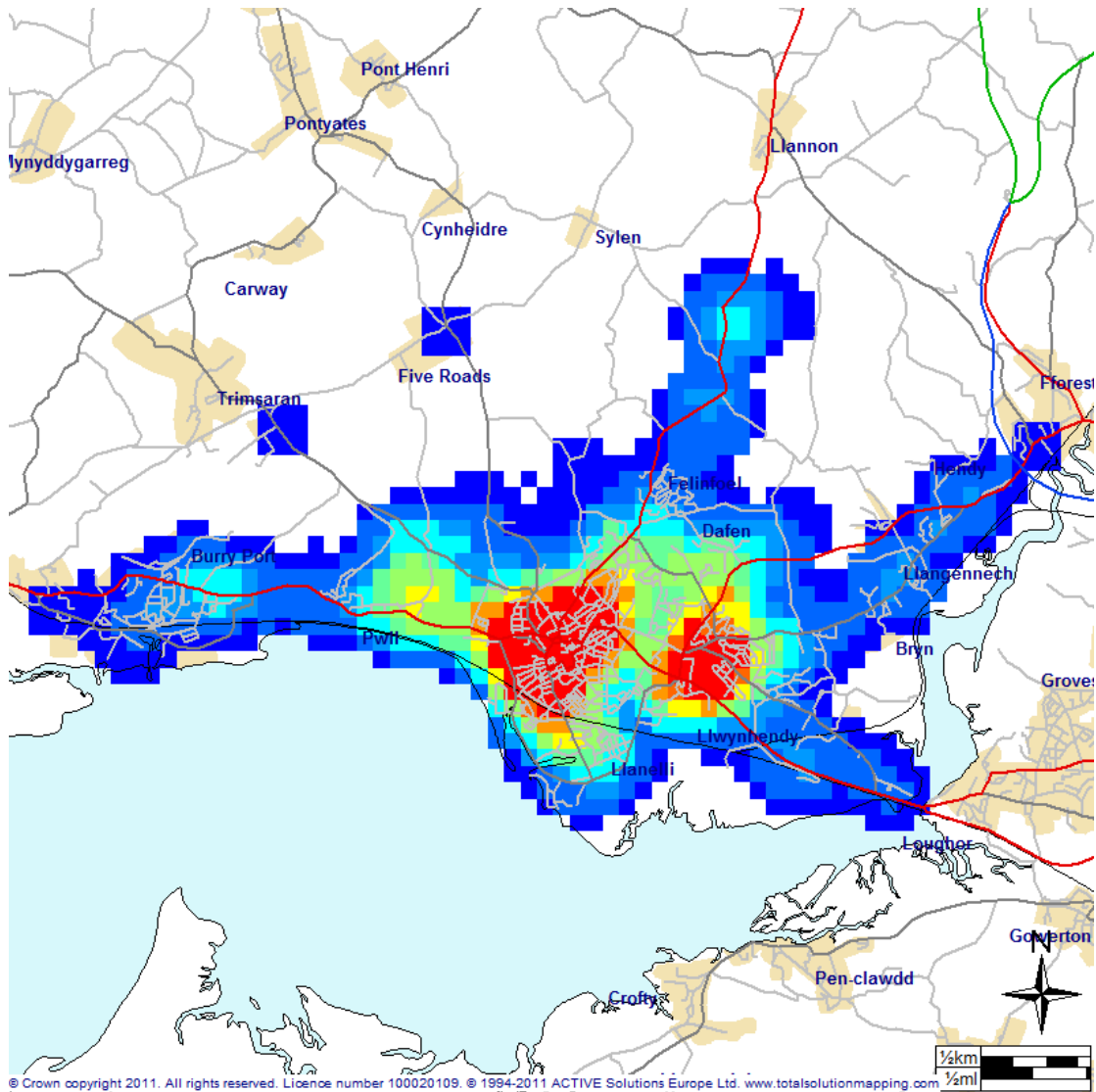
Further incident information – RTC incidents

The graph below shows the trend in Road Traffic Collision (RTC) incidents over the last five fiscal years. We are working with our partners and have introduced RTC reduction initiatives in order to drive down the number of incidents within the Station Ground.



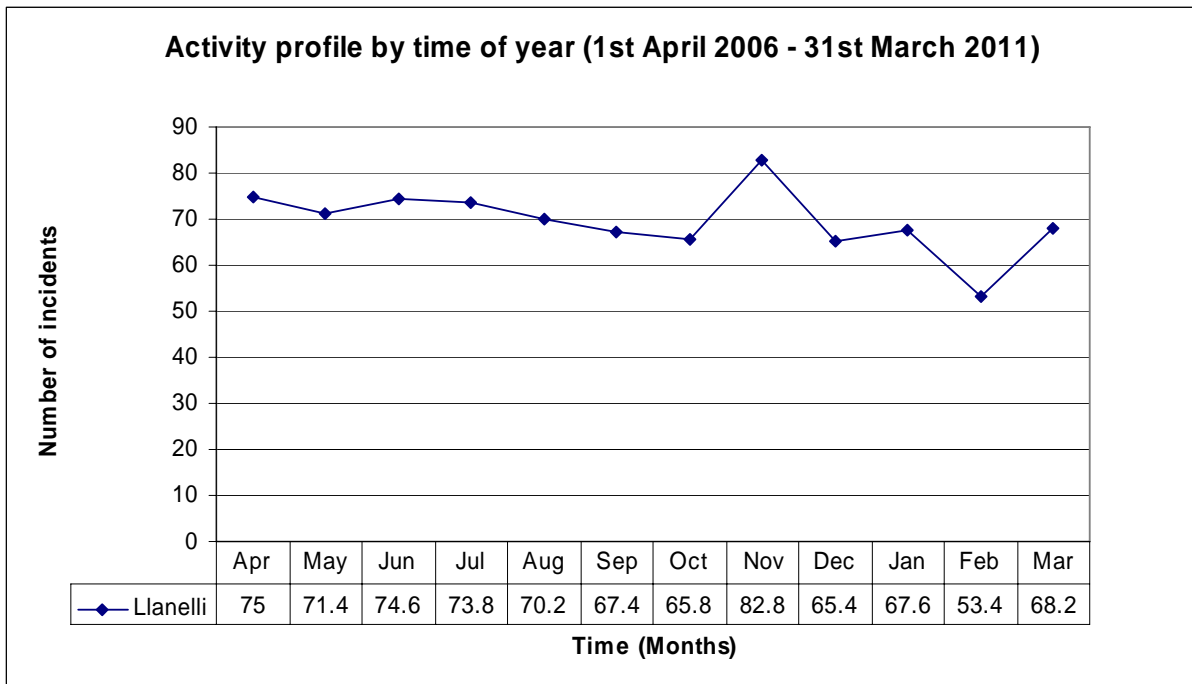
(Source: PC stats)

RTC Hotspots for Llanelli Station Ground 01/04/06 – 31/03/11



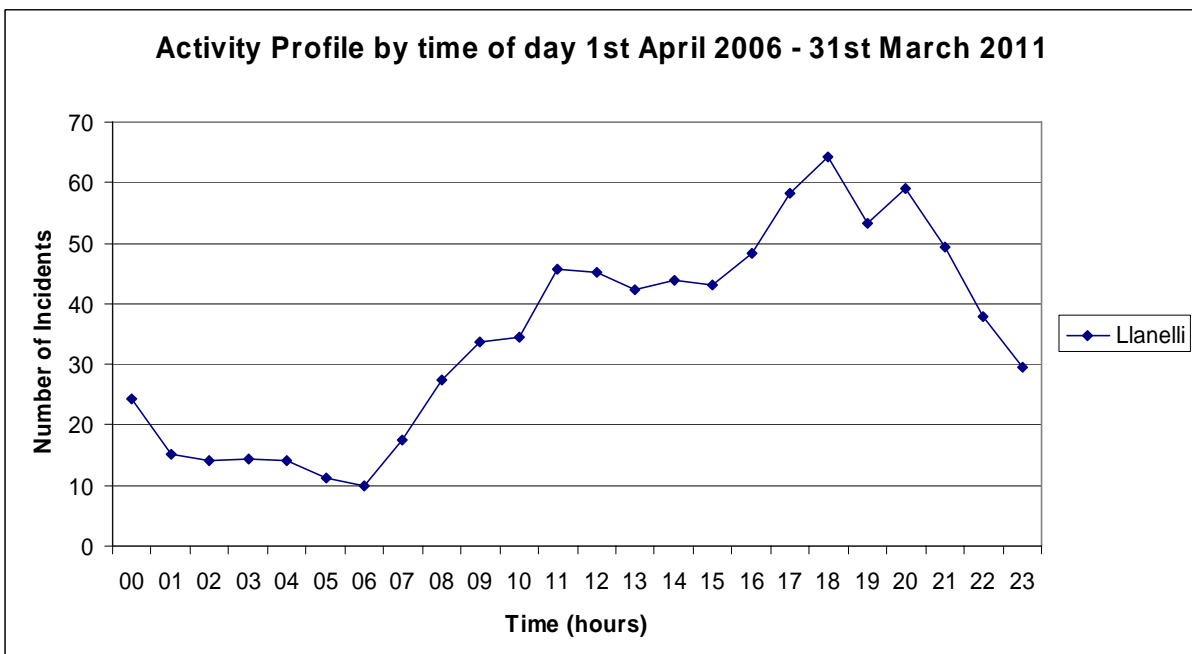
Key	Number of incidents (per 250 metres)
Blue	1
Light Blue	2
Cyan	3
Light Green	4
Green	5
Yellow-Green	6
Yellow	7
Orange	8
Dark Orange	9
Red	10 and over

The following graph shows the average number of incidents for the station by time of year, for the last five years. Many incidents are affected by the weather, for example dry spells can mean an increase in the number of grass fires and significant rainfall can lead to flooding incidents, and this is reflected in the seasonal activity profile.



(Source: PC stats)

This analysis gives a clear picture of the time of day that activities occur. The risk is generally higher when people are going about their work or cooking and reduces overnight.



(Source: PC stats)

Explanation of Terms

Primary fire - A fire involving property of value e.g. houses, commercial premises, farm buildings, vehicles etc.

Dwelling fire - A property that is also a place of residence.

Secondary fire - Fires confined to derelict buildings, grass, refuse, derelict vehicles etc.

Chimney Fire - A chimney fire is defined within these figures as a fire that was confined to the chimney and did not spread to the house.

Special Services - Fire and Rescue Services are also required to attend a variety of non-fire related incidents. Examples of these include road traffic collisions, collapsed structures, chemical spillages and flooding etc.

Road Traffic Collision (RTC) - Fire and Rescue Services attend road traffic collisions where it is known or believed that persons may be trapped or where they are required to make the area safe e.g. fuel spillage.

False alarms - are split into 3 categories:

False alarm deliberate – this incident classification is used for hoax or malicious fire calls where the fire service attend to a report of fire but on investigation it is found that the call was a hoax.

False alarm good intent – where a call is made to the fire service with good intent but on inspection it is found that there is no need for action e.g. controlled burning.

False alarm mechanical – where an alarm call has been received and upon attendance it is found to be a false alarm due to system fault or unsuitable equipment etc.

Co Responders - Where specially trained fire service staff attend to injured or seriously ill patients in support of the ambulance service.

Incident

An emergency occurrence where the fire service makes an attendance.

Station Ground

The area where that fire station provides the nearest attendance in the event of an emergency.