

Risk Profile
Mid & West Wales Fire Service

Station 62 – Carmarthen



Contact Details:

Station Manager: Justin Lewis
Station Liaison: Nigel Gibbard

Address:

Carmarthen Fire Station
Lime Grove Avenue
Carmarthen
Carmarthenshire
SA31 1SP

Tel: - 01267 238643

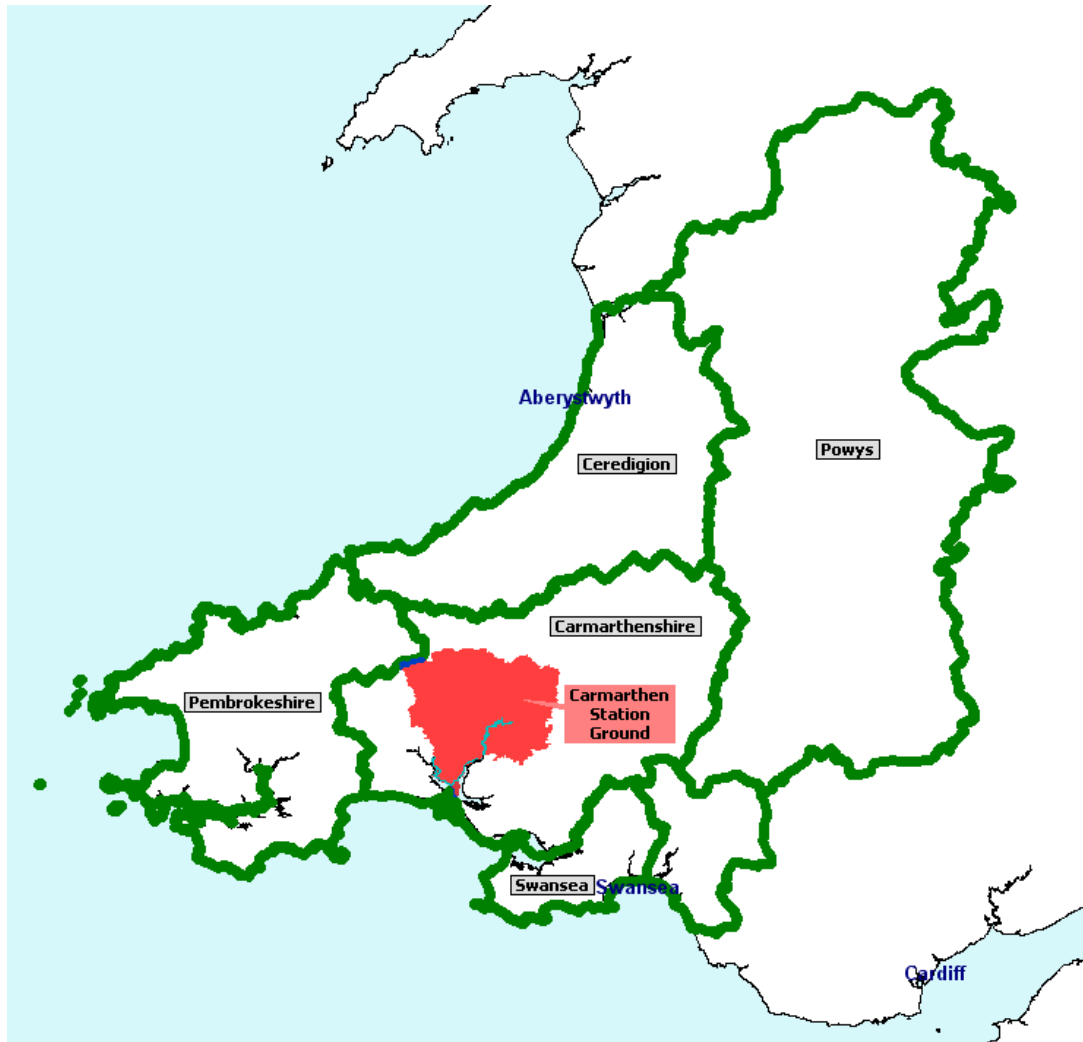
Email: mail@mawwfire.gov.uk

ALWAYS RING 999 IN AN EMERGENCY.

The following report contains information about Carmarthen Fire Station. This information will assist in identifying areas where future activity should be focused and also give an overview of the area to those not familiar with it. This will be updated each year.

General Information about the area

Map of Mid and West Wales Fire and Rescue Service. Carmarthen fire station ground is highlighted.



(Source: PC stats)

Statistics Carmarthen station area:-

Population	Population of Carmarthenshire	Population of Mid and West Wales Fire and Rescue Service
28,378	180,700	875,900

Figures based on 2010 population estimates (www.stats-wales.gov.uk)

STATION OVERVIEW

CREWING ARRANGEMENTS

Carmarthen Fire Station is staffed using a 'Day Crewed' System which means that the station is crewed by full-time personnel during the daytime with Retained (part-time) personnel covering the evening using an alerter system.

The establishment consists of:-

1 Station Liaison Officer

14 Full Time Firefighters made up of two watches – Blue and White. Each watch consists of 1 Watch Manager, 1 Crew Manager and 5 Firefighters.

19 Retained Firefighters, consisting of 1 Watch Manager, 3 Crew Managers and 15 Firefighters.

APPLIANCE INFORMATION

Carmarthen station has:

- 1 Standard Fire Engine - this is a general-purpose fire fighting appliance.
- 1 Rescue Pump – Fire Appliance with upgraded equipment for dealing with Road Traffic Collisions
- 1 Rescue Boat - these may be used for effecting rescues from inland and specific costal waterways, they are also used for providing safety for crews working on or near water.
- 1 Incident Command Unit - mobilised to large incidents of a protracted nature. It controls all communications on the incident ground and provides a single point of contact for our Control Room

LOCATION

Carmarthen fire station was built in the 1950's and is on the same campus as Mid and West Wales Fire and Rescue Service Headquarters. The station covers Carmarthen Town and the surrounding communities of Kidwelly, Pontyates, Tumble, Newcastle Emlyn, Llandysul, Llandeilo and Whitland.

Carmarthen town is the administrative centre for the County as well as being the location for Mid and West Wales Fire and Rescue Service Headquarters, but the remaining station area is predominantly rural.

RISKS

The main risk for Carmarthen and its surrounding communities are the A and B road networks leading to Carmarthen as well as the trunk roads, the A40 and A48 which traverses through Carmarthen.

Carmarthen Town and its surrounding communities are predominately of average risk for domestic housing with a few areas of above average risk. Carmarthen Town is a busy retail shopping centre with numerous public houses and hotels. The town also has other risks which include West Wales General Hospital, two large colleges, two comprehensive schools, two animal feed mills and a railway station. The river Towy flows through the town and down to the estuary at Llansteffan and can, at times, pose a risk from flooding and water rescues.

KEY WORK ACTIVITY AREAS FOR CARMARTHEN FIRE STATION:

1. Road Traffic Collision Reduction
2. Targeting of Youth Groups to deliver Fire Awareness
3. Reduction in unwanted Fire Calls
4. Chip Pan Fires Awareness
5. Operational Information Gathering of surrounding risks
6. Home Fire Safety Checks providing safety advice to householders.

PREVENTION

Risk Areas are targeted with Home Fire Safety Checks. Local firefighters and community safety staff visit homes and provide fire safety advice and where necessary will supply and install smoke alarms free of charge. These checks are the cornerstone of the proactive role the Service is now adopting in its drive to reduce the deaths and injuries that are caused by accidental fires. Carmarthen Fire Station carry out approximately 500 Home Fire Safety Checks annually.

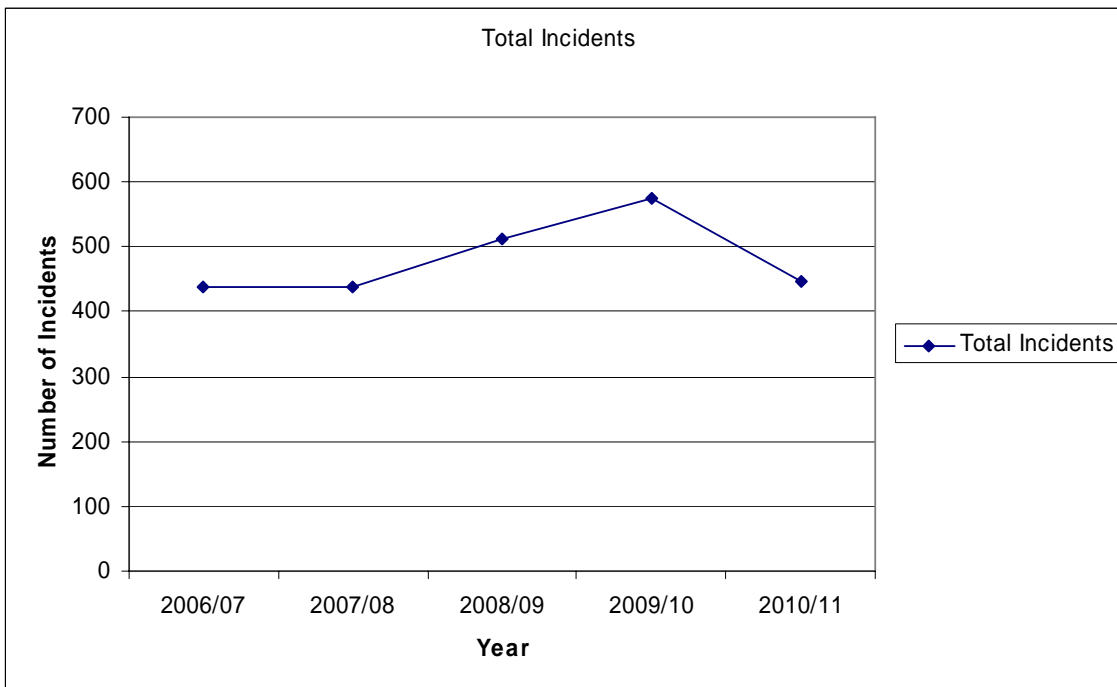
Fires in the home are the main cause of fire deaths. The typical causes of fire in the home include

- Cookers left unattended
- Careless discarding of cigarettes
- Overloaded electrical sockets
- Children playing with matches
- Cooking after drinking alcohol

A home fire safety check takes about an hour to complete and is generally undertaken by two Fire Service representatives. Getting a smoke alarm, regularly testing and maintaining it, as well as planning an escape route in the event of a fire can dramatically decrease the risk of death or serious injury. You can request a home fire safety check for yourself or a dependant relative by contacting the Service on 0800 169 1234 or by sending an e-mail request to your local Fire Service office via an online form.

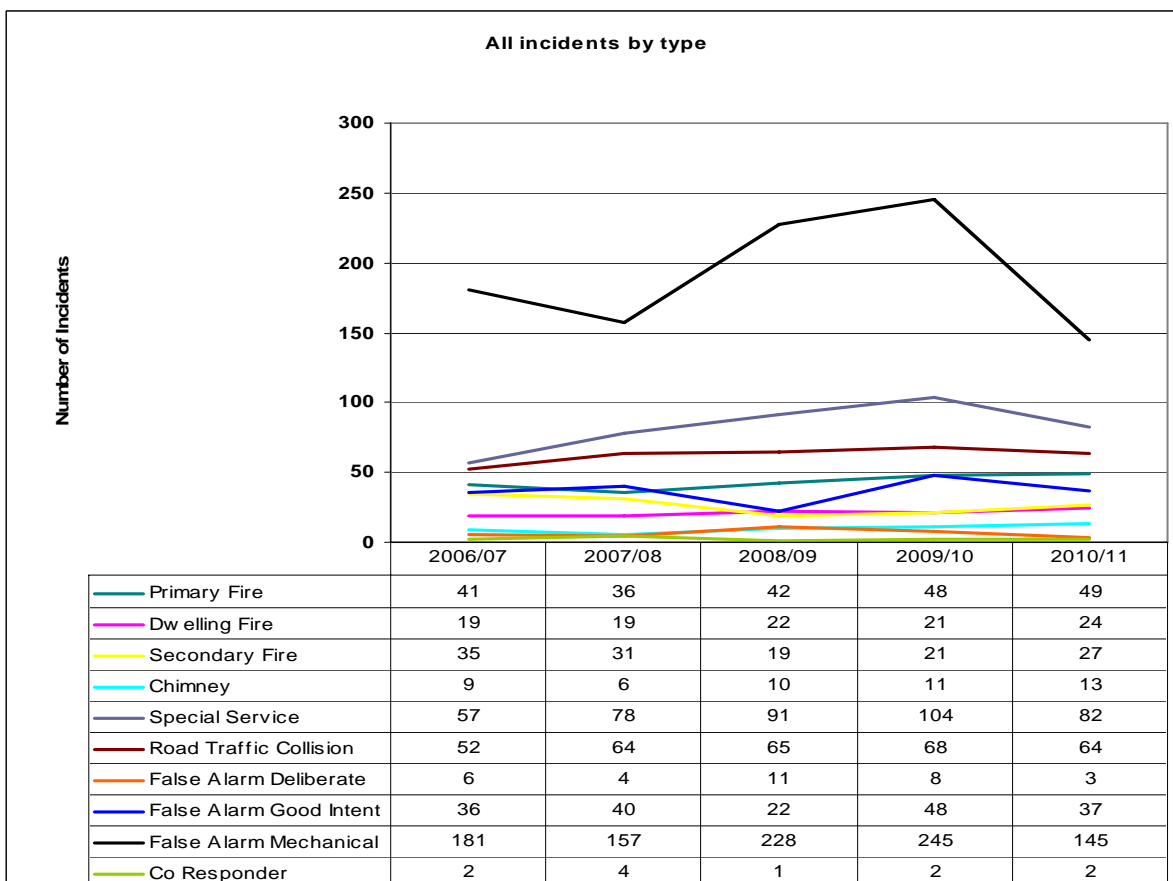
Specific Details about incidents

The following graph shows the trend in the total number of all incidents within Carmarthen station ground over the five years (1st April 2006 -31st March 2011).



(Source: PC stats)

The following line graph shows the trend in different types of incidents* for the station ground for the last five years (1st April 2006 -31st March 2011).



(Source: PC stats)

* see appendix A for incident type definitions

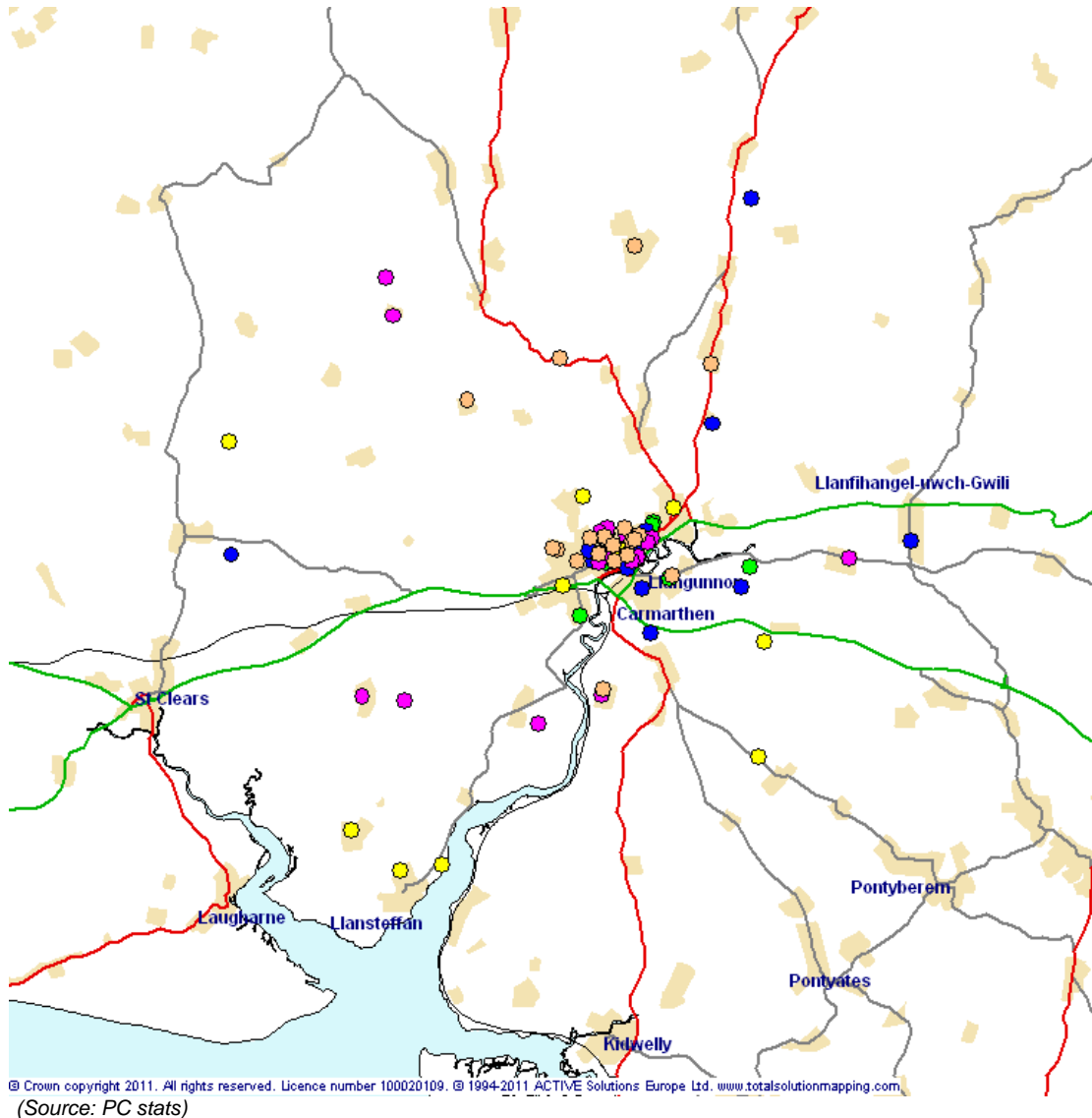
Incident Information – Accidental Dwelling Fires and Rescues, Casualties and Fatalities

The definition for the type of property recorded as dwelling is as follows:

- House of multiple occupancy
- Living accommodation (private, local authority & housing association)
- Sheltered Housing

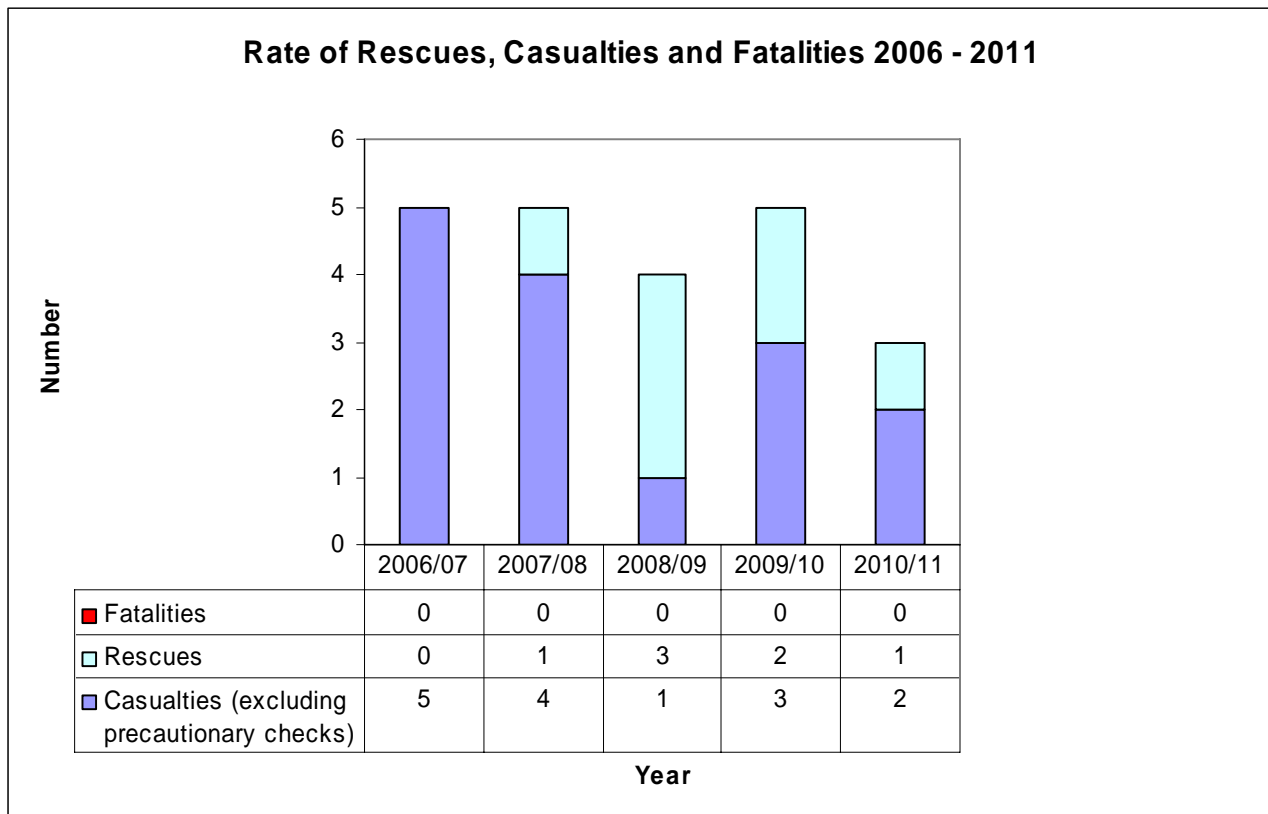
The following map shows the number and location of accidental dwelling fires within Carmarthen station ground over the last five years. Of the 94 fires, only 75 dwellings were known to have smoke alarms.

Accidental Dwelling Fires within Carmarthen Station Ground 01.04.06 – 31.03.11



Key	Count	Description
	17	01/04/2006-31/03/2007
	17	01/04/2007-31/03/2008
	21	01/04/2008-31/03/2009
	20	01/04/2009-31/03/2010
	19	01/04/2010-31/03/2011
	94	Total

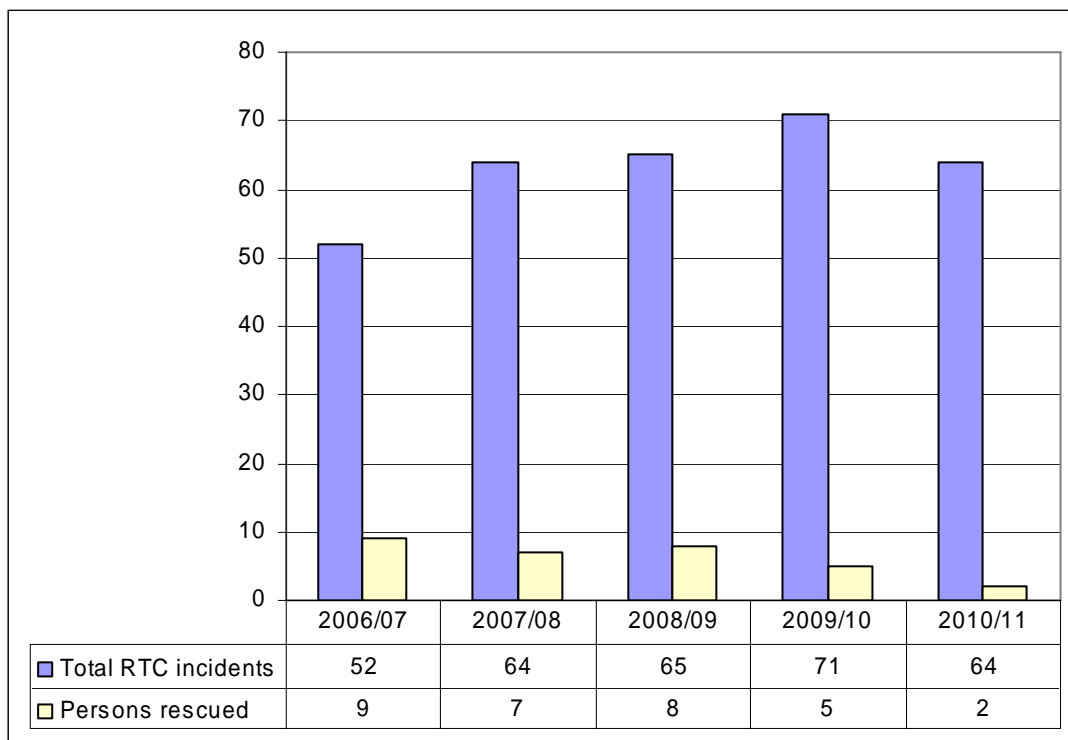
The graph below compares the rate of rescues, casualties and fatalities for accidental dwelling fires within Carmarthen station ground. The figures are based on data from the last 5 years.



(Source: PC stats)

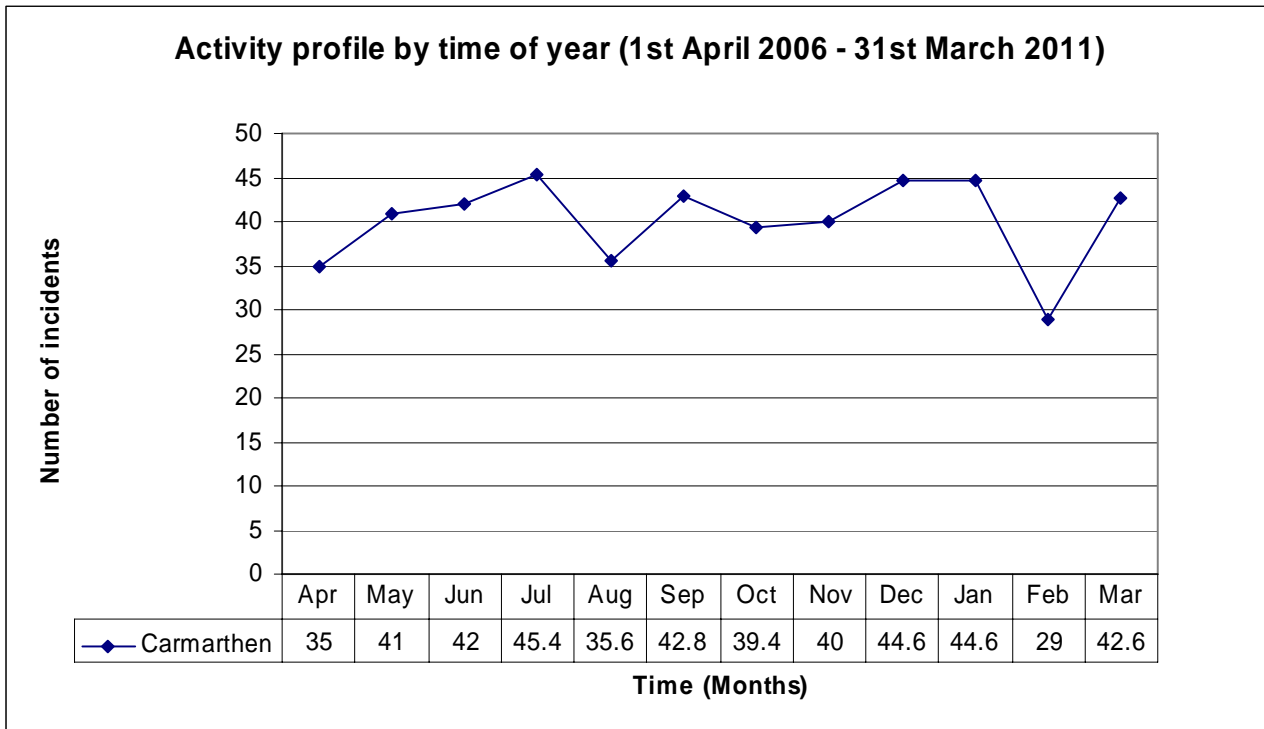
Further incident information – RTC incidents

The graph below shows the trend in Road Traffic Collision (RTC) incidents over the last five fiscal years. We are working with our partners and have introduced RTC reduction initiatives in order to drive down the number of incidents within the Station Ground.



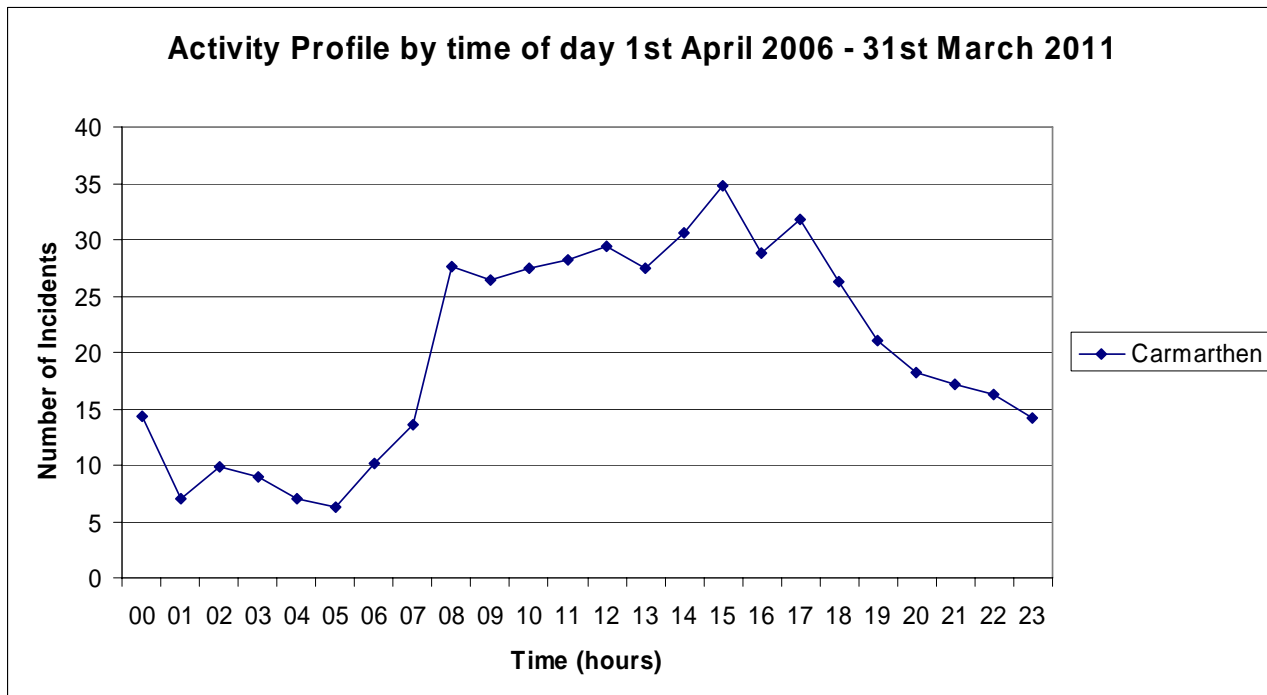
(Source: PC stats)

The following graph shows the average number of incidents for the station by time of year, for the last five years. Many incidents are affected by the weather, for example dry spells can mean an increase in the number of grass fires and significant rainfall can lead to flooding incidents, and this is reflected in the seasonal activity profile.



(Source: PC stats)

This analysis gives a clear picture of the time of day that activities occur. The risk is generally higher when people are going about their work or cooking and reduces overnight.



(Source: PC stats)

Explanation of Terms

Primary fire - A fire involving property of value e.g. houses, commercial premises, farm buildings, vehicles etc.

Dwelling fire - A property that is also a place of residence.

Secondary fire - Fires confined to derelict buildings, grass, refuse, derelict vehicles etc.

Chimney Fire - A chimney fire is defined within these figures as a fire that was confined to the chimney and did not spread to the house.

Special Services - Fire and Rescue Services are also required to attend a variety of non-fire related incidents. Examples of these include road traffic collisions, collapsed structures, chemical spillages and flooding etc.

Road Traffic Collision (RTC) - Fire and Rescue Services attend road traffic collisions where it is known or believed that persons may be trapped or where they are required to make the area safe e.g. fuel spillage.

False alarms - are split into 3 categories:

False alarm deliberate – this incident classification is used for hoax or malicious fire calls where the fire service attend to a report of fire but on investigation it is found that the call was a hoax.

False alarm good intent – where a call is made to the fire service with good intent but on inspection it is found that there is no need for action e.g. controlled burning.

False alarm mechanical – where an alarm call has been received and upon attendance it is found to be a false alarm due to system fault or unsuitable equipment etc.

Co Responders - Where specially trained fire service staff attend to injured or seriously ill patients in support of the ambulance service.

Incident

An emergency occurrence where the fire service makes an attendance.

Station Ground

The area where that fire station provides the nearest attendance in the event of an emergency.