

**Risk Profile**  
**Mid & West Wales Fire Service**

**Station 71 - Whitland**



**Contact Details:**

**Station Manager: Justin Lewis**  
**Station Liaison: Nigel Gibbard**

**Address:**  
Whitland Fire Station  
Carmarthen Road  
Whitland  
Carmarthenshire  
SA34 0AE

**Tel:** 0370 6060699

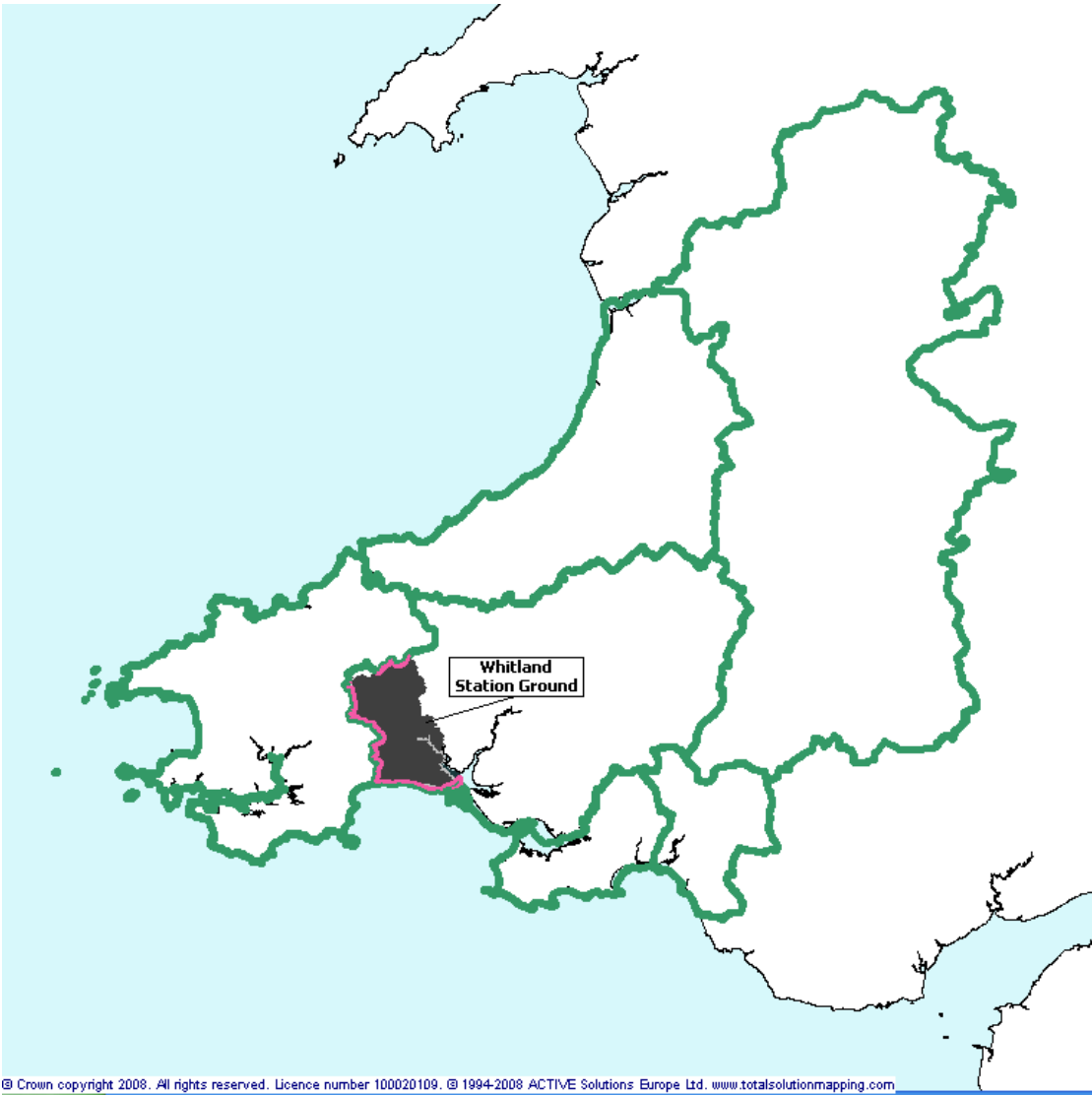
**Email:** [mail@mawwfire.gov.uk](mailto:mail@mawwfire.gov.uk)

**ALWAYS RING 999 IN AN EMERGENCY**

The following report contains information about Whitland Fire Station. This information will assist in identifying areas where future activity should be focused and also give an overview of the area to those not familiar with it. This will be updated each year.

**General Information about the area**

Map of Mid and West Wales Fire and Rescue Service. Whitland fire station ground is highlighted.



© Crown copyright 2008. All rights reserved. Licence number 100020109. © 1994-2008 ACTIVE Solutions Europe Ltd. www.totalsolutionmapping.com

Statistics Whitland station area:-

Population	Population of Carmarthenshire	Population of Mid and West Wales Fire and Rescue Service
10,138	180,700	875,900

*Figures based on 2010 population estimates (www.stats-wales.gov.uk)*

## **STATION OVERVIEW**

### **CREWING ARRANGEMENTS**

Whitland Fire Station is staffed by Retained (part-time) firefighters. This means that during the day and night individuals within the community of Whitland are on call to attend the fire station should their alerters go off. We have farmers, office workers, bus drivers and many other varying professions who at the drop of a hat leave their full time work and respond to incidents.

### **APPLIANCE INFORMATION**

Whitland Fire and Rescue Station has 1 fire engine with dedicated rescue equipment – this is known as a rescue pump.

### **LOCATION**

Whitland, or in Welsh 'Hendy-Gwyn', is a small town on the borders of Carmarthenshire and Pembrokeshire lying on the River Taf. It sits on the busy A40 to Haverfordwest and on the main line to the busy passenger sea ports of Fishguard and Pembroke Dock. The area is predominately rural, however Whitland has a number of thriving businesses, including a school, Ysgol Duffryn Taf and the well-known Hywel Dda interpretive centre.

Whitland boasts many local sporting teams including Rugby Union, Football, Cricket, Short and Long Mat Bowls, Darts, Billiards etc. Many of these sporting clubs have junior sections. Whitland RFC currently play in the National League Division One West and are one of the top teams in West Wales. The Whitland Junior rugby section are known as the Junior Borderers because of the borderline location with Pembrokeshire and have seen many a star rise through their ranks. A prime example is Michael Phillips, Welsh international rugby player. Whitland is twinned with the small town of Pipriac in Ille-et-Vilaine, Brittany.

### **RISKS**

The main risk for Whitland and its surrounding communities are the A and B road networks into and out of Whitland and, being a major transport route for both road and rail freight, a large amount of seasonal traffic is experienced.

Whitland Town has varying style of properties, ranging from the traditional terraced housing through to larger detached properties. The surrounding villages are predominately of rural domestic housing, with a few areas of special risk due to the location of agricultural businesses.

Within Whitland itself there are many small to medium enterprises that are classed as a small risk, however visitors to Whitland will be aware of the Whitland Creamery which closed in 1994. This still stands largely unoccupied and poses a large threat to arson and anti social behaviour within the town.

The river Taf flows from through Whitland and the town has experienced several incidents of flooding recently and this still poses a risk.

## **KEY WORK ACTIVITY AREAS FOR WHITLAND FIRE STATION:**

1. Road Traffic Collision reduction.
2. Targeting of Youth Groups to deliver Fire Awareness.
3. Undertaking Home Fire Safety Checks (HFSCs) to provide safety advice to householders.
4. Participating in Flooding Awareness with Local Partnerships and Properties.

## **PREVENTION**

Risk Areas are targeted with Home Fire Safety Checks. Local firefighters and community safety staff visit homes and provide fire safety advice and where necessary will supply and install smoke alarms free of charge. These checks are the cornerstone of the proactive role the Service is now adopting in its drive to reduce the deaths and injuries that are caused by accidental fires.

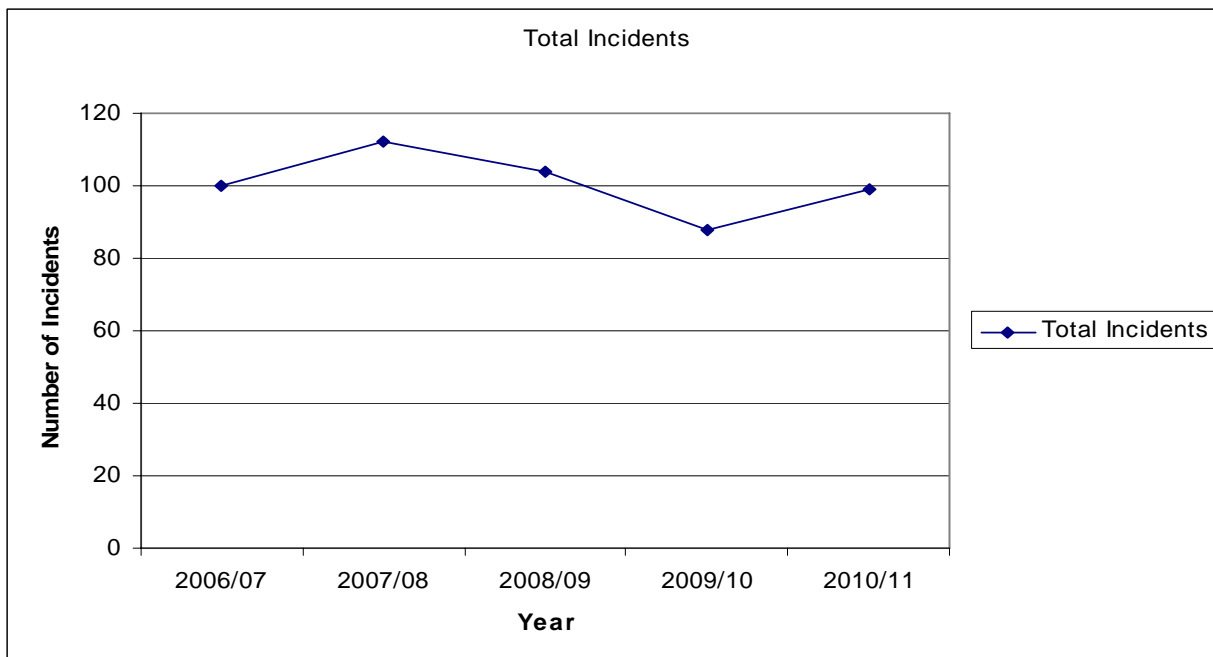
Whitland Fire Station carries out approximately 150 Home Fire Safety Checks annually. Fires in the home are the main cause of fire deaths and injuries. The typical causes of fire in the home include

- Cookers left unattended
- Careless discarding of cigarettes
- Overloaded electrical sockets
- Children playing with matches
- Cooking after drinking alcohol

A home fire safety check takes about an hour to complete and is generally undertaken by two Fire Service representatives. Getting a smoke alarm, regularly testing and maintaining it, as well as planning an escape route in the event of a fire can dramatically decrease the risk of death or serious injury. You can request a home fire safety check for yourself or a dependant relative by contacting the Service on 0800 169 1234 or by sending an e-mail request to your local Fire Service office via an online form from [www.mawwfire.gov.uk/home\\_safety\\_eng/hfsc.asp](http://www.mawwfire.gov.uk/home_safety_eng/hfsc.asp).

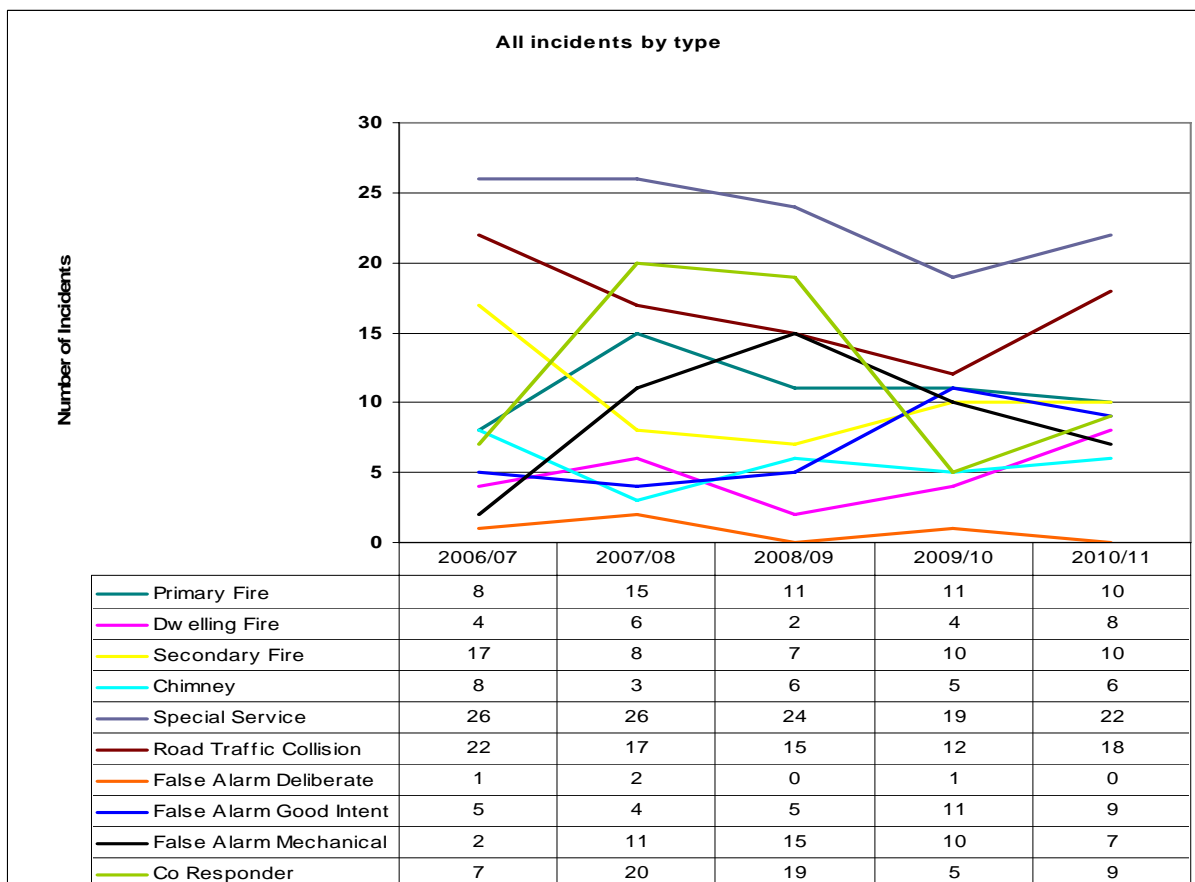
### Specific Details about incidents

The following graph shows the trend in the total number of all incidents within Whitland station ground over the five years (1<sup>st</sup> April 2006 -31<sup>st</sup> March 2011).



(Source: PC stats)

The following line graph shows the trend in different types of incidents\* for the station ground for the last five years (1<sup>st</sup> April 2005 -31<sup>st</sup> March 2010).



(Source: PC stats)

\* see appendix A for incident type definitions  
 Last updated: 25/11/2011

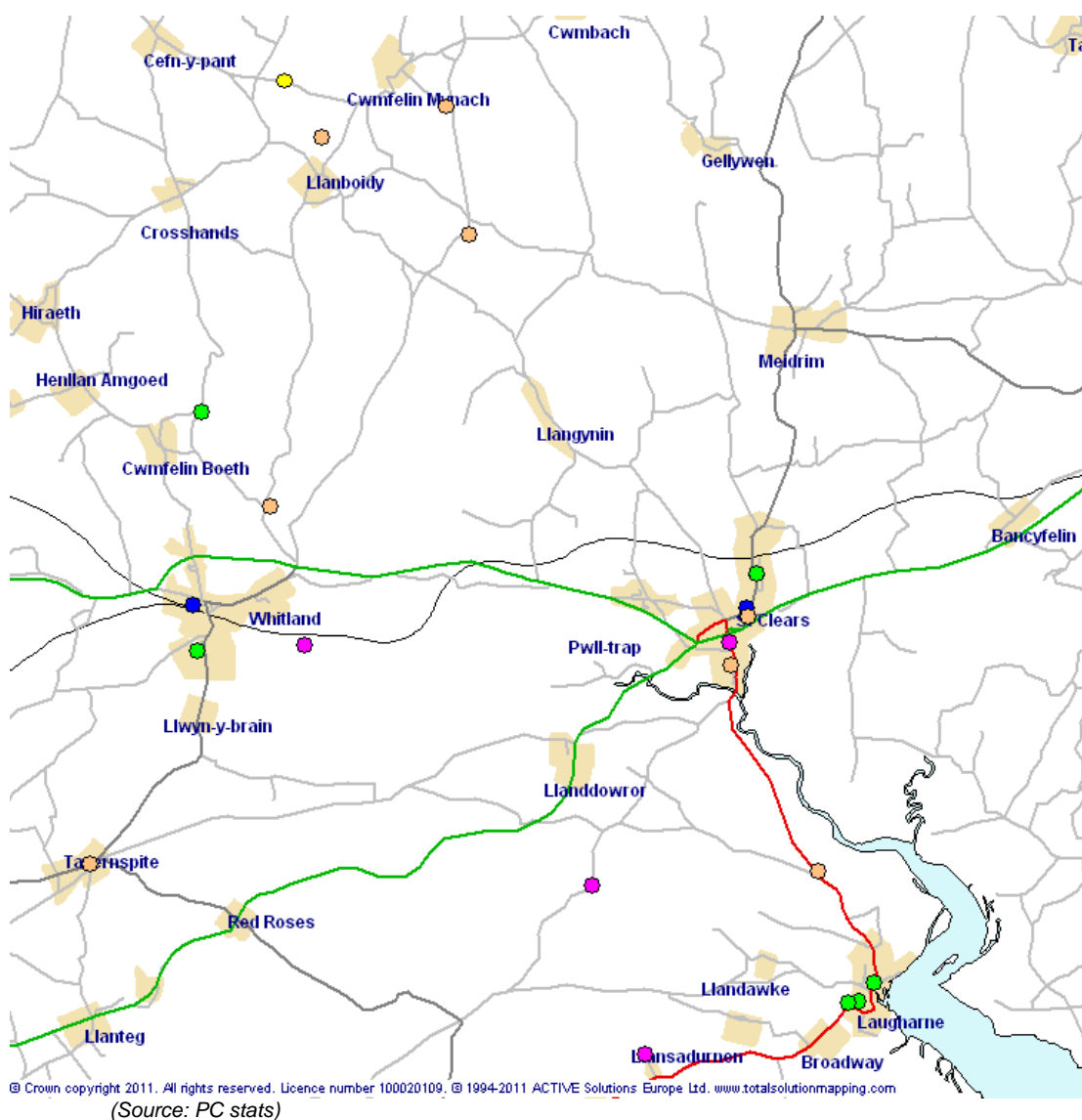
## Incident Information – Accidental Dwelling Fires and Rescues, Casualties and Fatalities

The definition for the type of property recorded as dwelling is as follows:

- House of multiple occupancy
- Living accommodation (private, local authority & housing association)
- Sheltered Housing

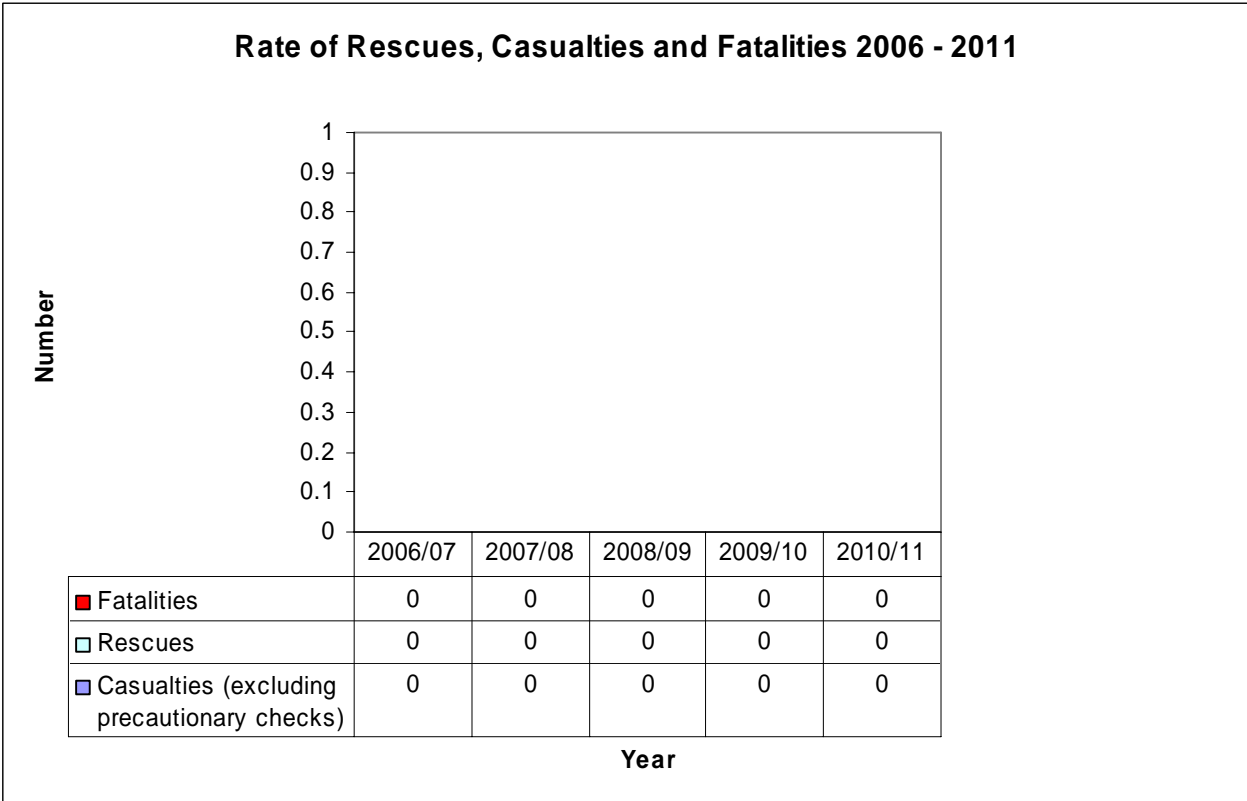
The following map shows the number and location of accidental dwelling fires within Whitland station ground over the last five years. Of the 23 fires, only 10 dwellings were known to have smoke alarms.

### Accidental Dwelling Fires within Whitland Station Ground 01.04.06 – 31.03.11



Key	Count	Description
	3	01/04/2006-31/03/2007
	6	01/04/2007-31/03/2008
	2	01/04/2008-31/03/2009
	4	01/04/2009-31/03/2010
	8	01/04/2010-31/03/2011
	23	Total

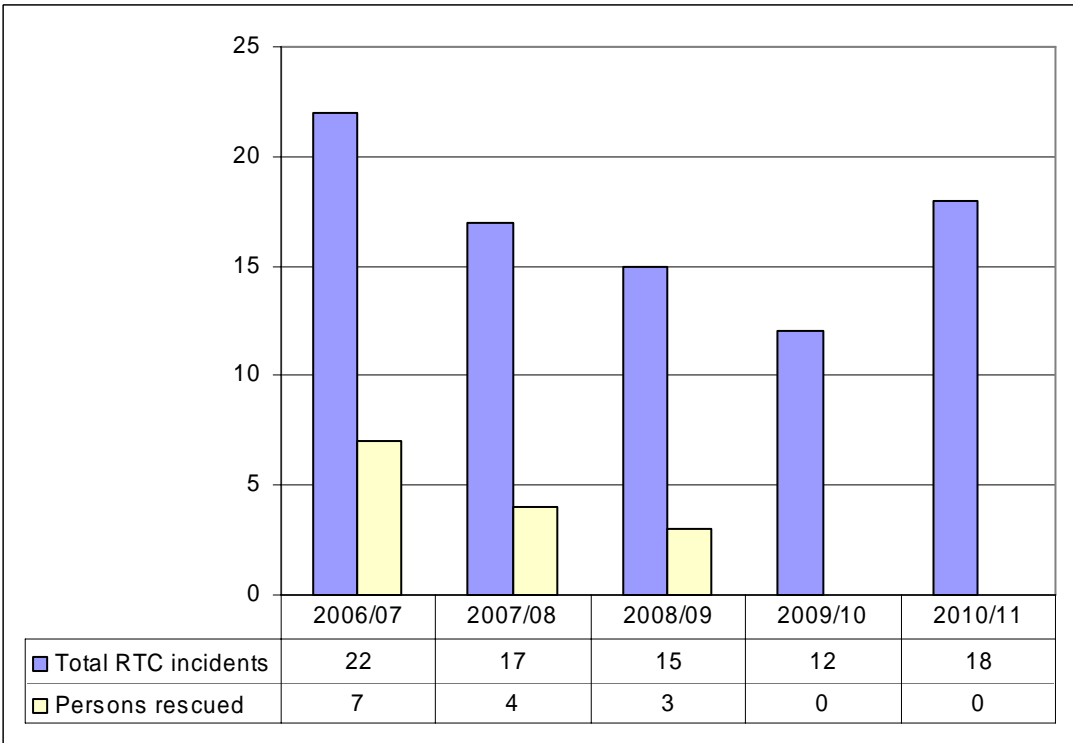
The rate of rescues, casualties and fatalities for accidental dwelling fires within Newcastle Emlyn station ground is 0 (zero) based on data from the last 5 years.



(Source: PC stats)

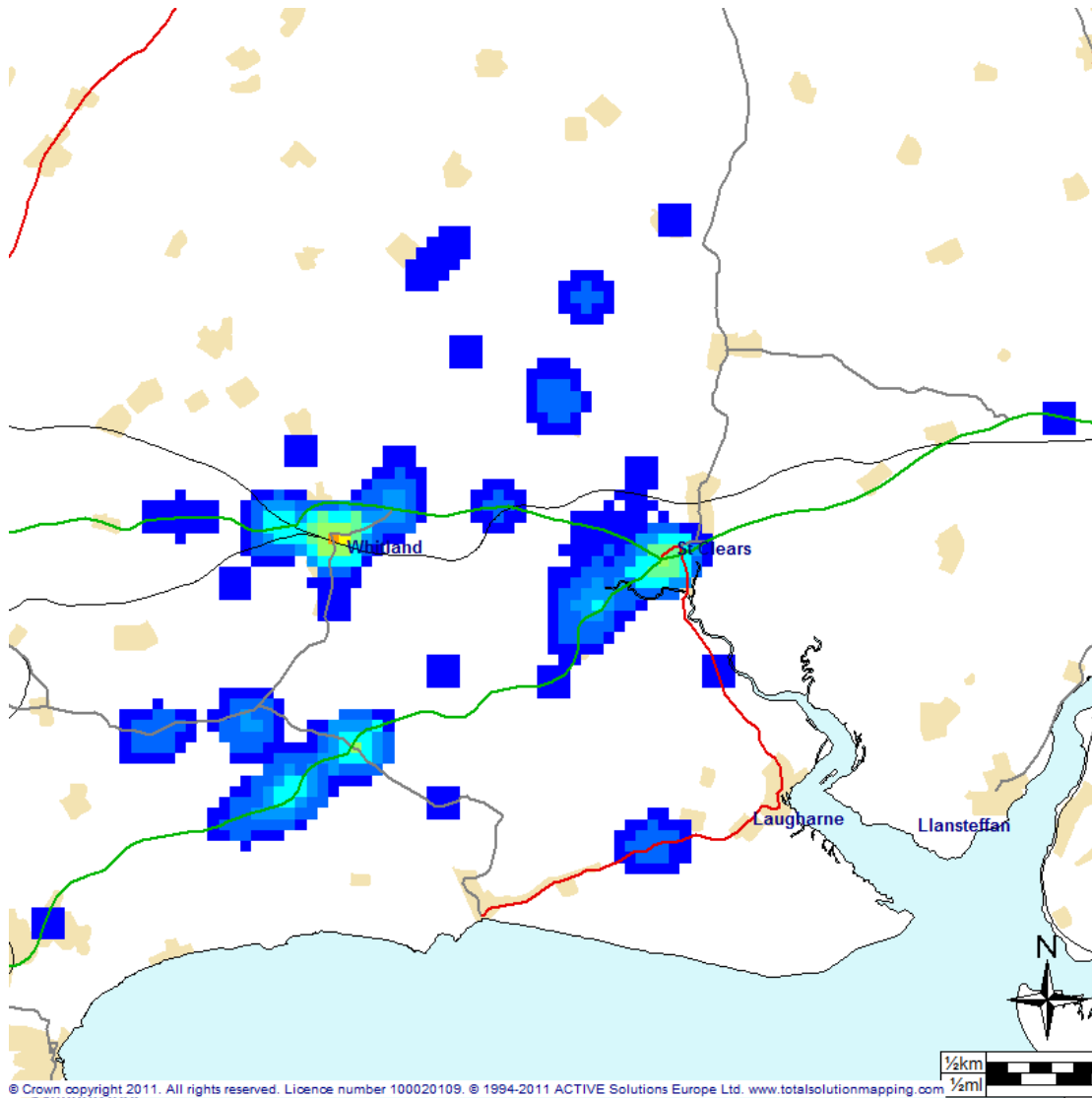
**Further incident information – RTC incidents**

The graph below shows the trend in Road Traffic Collision (RTC) incidents over the last five fiscal years. We are working with our partners and have introduced RTC reduction initiatives in order to drive down the number of incidents within the Station Ground.



(Source: PC stats)

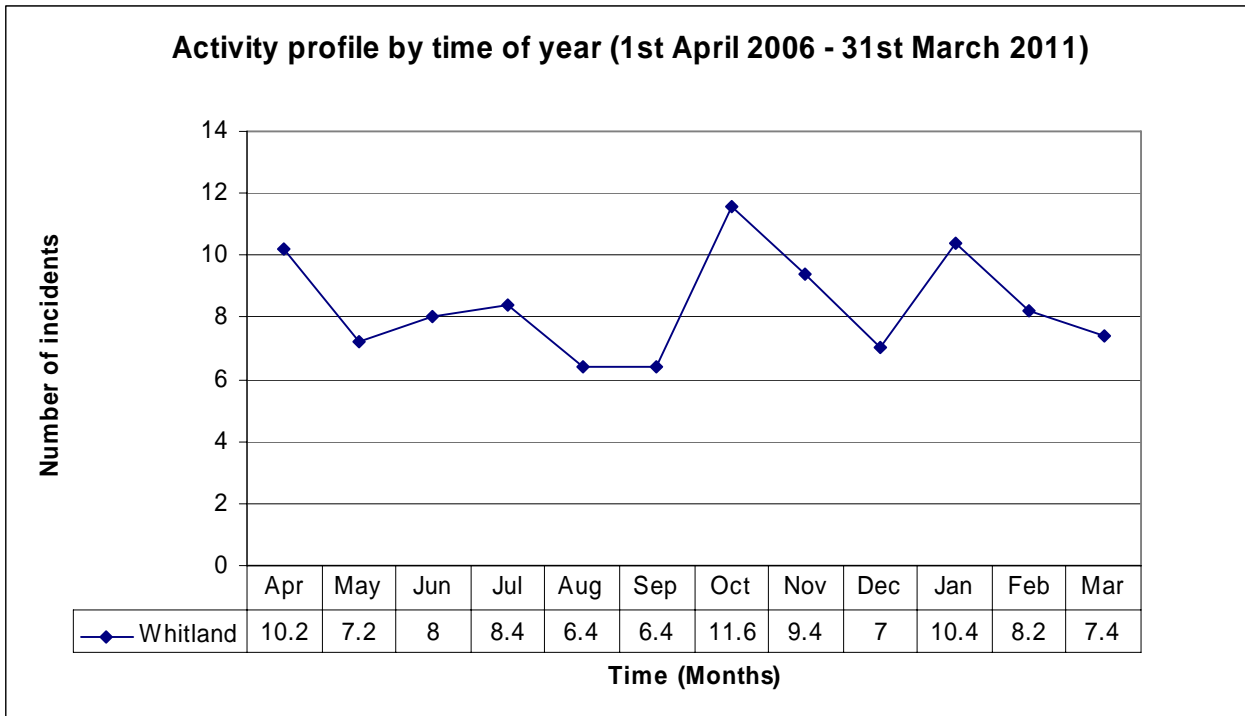
RTC Hotspots for Whitland Station Ground 01/04/06 – 31/03/11



(Source: PC stats)

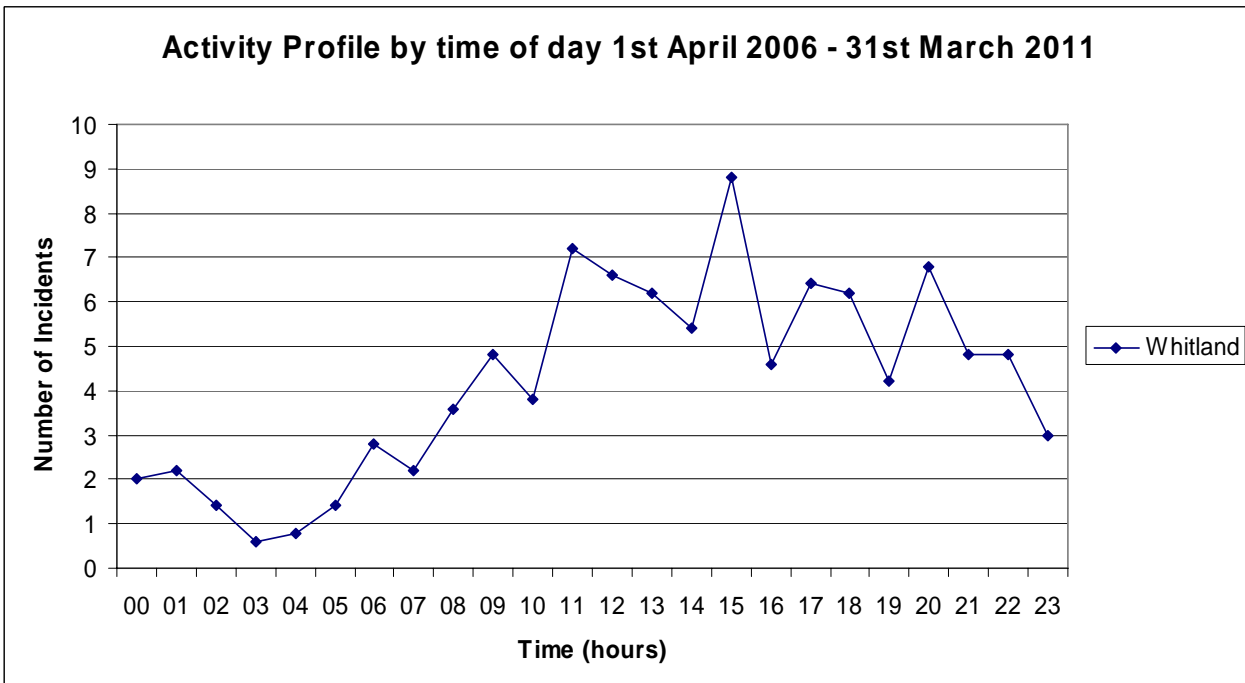
Key	Number of incidents (per 250 metres)
	1
	2
	3
	4
	5
	6
	7
	8
	9
	10 and over

The following graph shows the average number of incidents for the station by time of year, for the last five years. Many incidents are affected by the weather, for example dry spells can mean an increase in the number of grass fires and significant rainfall can lead to flooding incidents, and this is reflected in the seasonal activity profile.



(Source: PC stats)

This analysis gives a clear picture of the time of day that activities occur. The risk is generally higher when people are going about their work or cooking and reduces overnight.



(Source: PC stats)

## Explanation of Terms

**Primary fire** - A fire involving property of value e.g. houses, commercial premises, farm buildings, vehicles etc.

**Dwelling fire** - A property that is also a place of residence.

**Secondary fire** - Fires confined to derelict buildings, grass, refuse, derelict vehicles etc.

**Chimney Fire** - A chimney fire is defined within these figures as a fire that was confined to the chimney and did not spread to the house.

**Special Services** - Fire and Rescue Services are also required to attend a variety of non-fire related incidents. Examples of these include road traffic collisions, collapsed structures, chemical spillages and flooding etc.

**Road Traffic Collision (RTC)** - Fire and Rescue Services attend road traffic collisions where it is known or believed that persons may be trapped or where they are required to make the area safe e.g. fuel spillage.

**False alarms** - are split into 3 categories:

**False alarm deliberate** – this incident classification is used for hoax or malicious fire calls where the fire service attend to a report of fire but on investigation it is found that the call was a hoax.

**False alarm good intent** – where a call is made to the fire service with good intent but on inspection it is found that there is no need for action e.g. controlled burning.

**False alarm mechanical** – where an alarm call has been received and upon attendance it is found to be a false alarm due to system fault or unsuitable equipment etc.

**Co Responders** - Where specially trained fire service staff attend to injured or seriously ill patients in support of the ambulance service.

### Incident

An emergency occurrence where the fire service makes an attendance.

### Station Ground

The area where that fire station provides the nearest attendance in the event of an emergency.