

Risk Profile
Mid & West Wales Fire Service

Station 21 – Aberystwyth



Contact Details:

Station Manager: Arwel James

Address:

Aberystwyth Fire Station
Trefechan
Aberystwyth
Ceredigion
SY23 1BE

Telephone: 0370 6060699

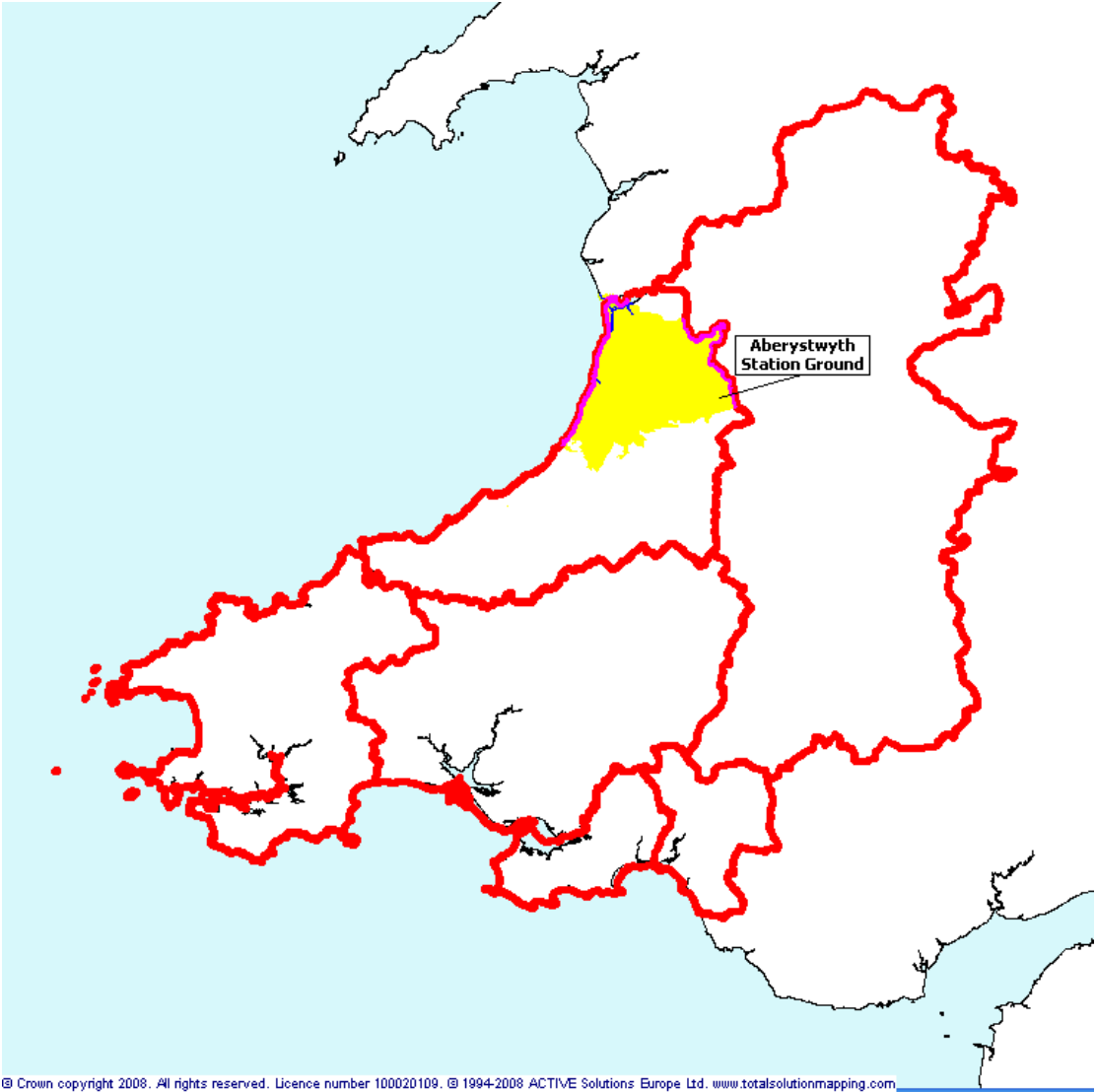
Email: mail@mawwfire.gov.uk

ALWAYS RING 999 IN AN EMERGENCY

The following report contains information about Aberystwyth Fire Station. This information will assist in identifying areas where future activity should be focused and also give an overview of the area to those not familiar with it. This will be updated each year.

General Information about the area

Map of Mid and West Wales Fire and Rescue Service. Aberystwyth fire station ground is highlighted.



© Crown copyright 2008. All rights reserved. Licence number 100020109. © 1994-2008 ACTIVE Solutions Europe Ltd. www.totalsolutionmapping.com

Statistics Aberystwyth station area:-

Population	Population of Ceredigion	Population of Mid and West Wales Fire and Rescue Service
32,443	76,900	875,900

Figures based on 2010 population estimates (www.stats-wales.gov.uk)

STATION OVERVIEW

CREWING ARRANGEMENTS

Aberystwyth Fire Station is staffed using a day crewed system. This means that the station is crewed by full-time personnel during the daytime with Retained Firefighters (part-time) personnel who provide fire cover using an alerter system to ensure that all the station's appliances are available 24 hours a day.

APPLIANCE INFORMATION

Aberystwyth station has:

- 1 fire engine with dedicated rescue equipment – this is known as a rescue pump.
- 1 Water Ladder – this is a general-purpose fire fighting appliance.
- 1 Rescue Boat Appliance - these may be used for effecting rescues from inland and specific costal waterways, they are also used for providing safety for crews working on or near water.
- 1 Aerial Ladder Platform - this is know as the ALP and is used for access and egress to high rise buildings.

LOCATION

Aberystwyth fire station was built in the 1963 and is on the same campus as Ceredigion Command Headquarters. The station covers Aberystwyth Town and supports the surrounding communities of Borth, Aberaeron, Tregaron, New Quay, Lampeter, Cardigan, and Machynlleth.

Aberystwyth town is the administrative centre for the Ceredigion County as well as being the location for the Command Headquarters, but the remaining station area is predominantly rural.

RISKS

The main risk for Aberystwyth and its surrounding communities are the A and B road networks leading to Aberystwyth as well as the trunk roads (A44 and the A487) which traverses through Aberystwyth and is part of the main thoroughfare to North Wales and the Midlands.

Aberystwyth Town and its surrounding communities are predominately of average risk for domestic housing, with a few areas of above average risk. Aberystwyth is a busy University Town with a large proportion of student accommodation. The National Library for Wales is one of the prominent buildings within the town itself; in addition to these there are a range of retail premises with numerous public houses and hotels. The town also has other risks which include Bronglais General Hospital, two comprehensive schools and a railway station. The town has 2 river courses - the Rheidol and the Ystwyth and both of these feed into the Harbour and at times, pose a risk from flooding and water rescues.

KEY WORK ACTIVITY AREAS FOR ABERYSTWYTH FIRE STATION:

1. Road Traffic Collision Reduction.
2. Targeting of Youth Groups to deliver Fire Awareness.
3. Reducing the number of unwanted Fire Calls.
4. Chip Pan Fires Awareness.
5. Gathering Operational Information of surrounding risks.
6. Undertaking Home Fire Safety Checks (HFSCs) to provide safety advice to householders.

PREVENTION

Local firefighters and community safety staff visit homes and provide fire safety advice and where necessary will supply and install smoke alarms free of charge. These checks are the cornerstone of the proactive role the Service is now adopting in its drive to reduce the deaths and injuries that are caused by accidental fires.

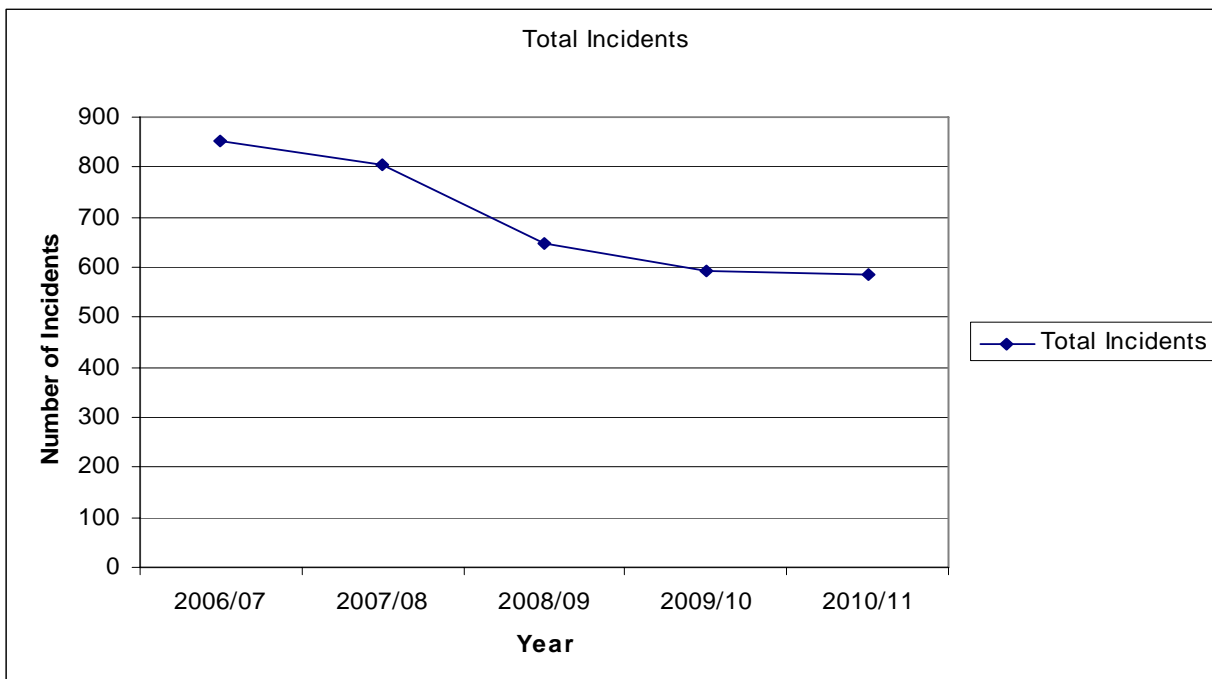
Aberystwyth Fire Station carries out approximately 850 Home Fire Safety Checks annually. Fires in the home are the main cause of fire deaths and injuries. The typical causes of fire in the home include:

- Cookers left unattended
- Careless discarding of cigarettes
- Overloaded electrical sockets
- Children playing with matches
- Cooking after drinking alcohol

A home fire safety check takes about an hour to complete and is generally undertaken by two Fire Service representatives. Getting a smoke alarm, regularly testing and maintaining it, as well as planning an escape route in the event of a fire can dramatically decrease the risk of death or serious injury. You can request a home fire safety check for yourself or a dependant relative by contacting the Service on 0800 169 1234 or by sending an e-mail request to your local Fire Service office via an online form from www.mawwfire.gov.uk/home_safety_eng/hfsc.asp.

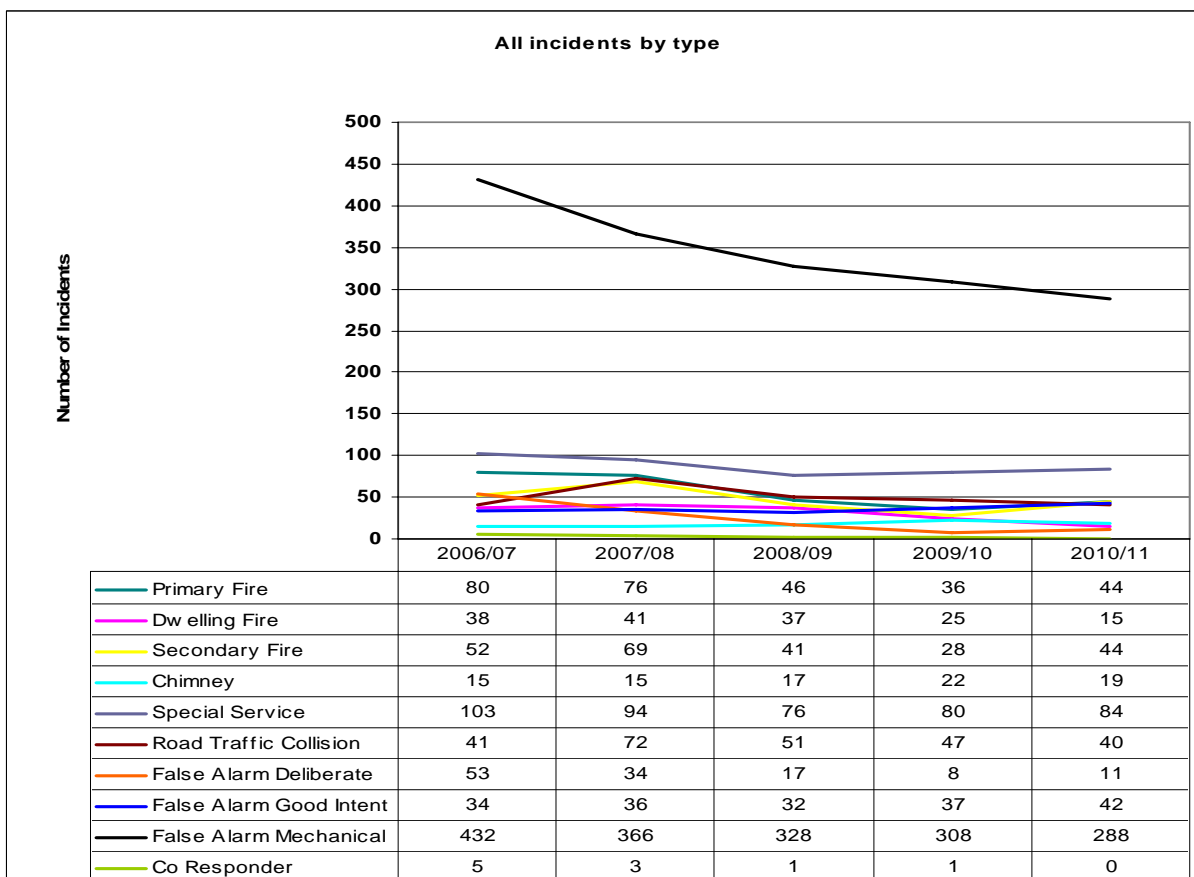
Specific Details about incidents

The following graph shows the trend in the total number of all incidents within Aberystwyth station ground over the five years (1st April 2006 -31st March 2011).



(Source: PC stats)

The following line graph shows the trend in different types of incidents* for the station ground for the last five years (1st April 2006 -31st March 2011).



(Source: PC stats)

* see appendix A for incident type definitions

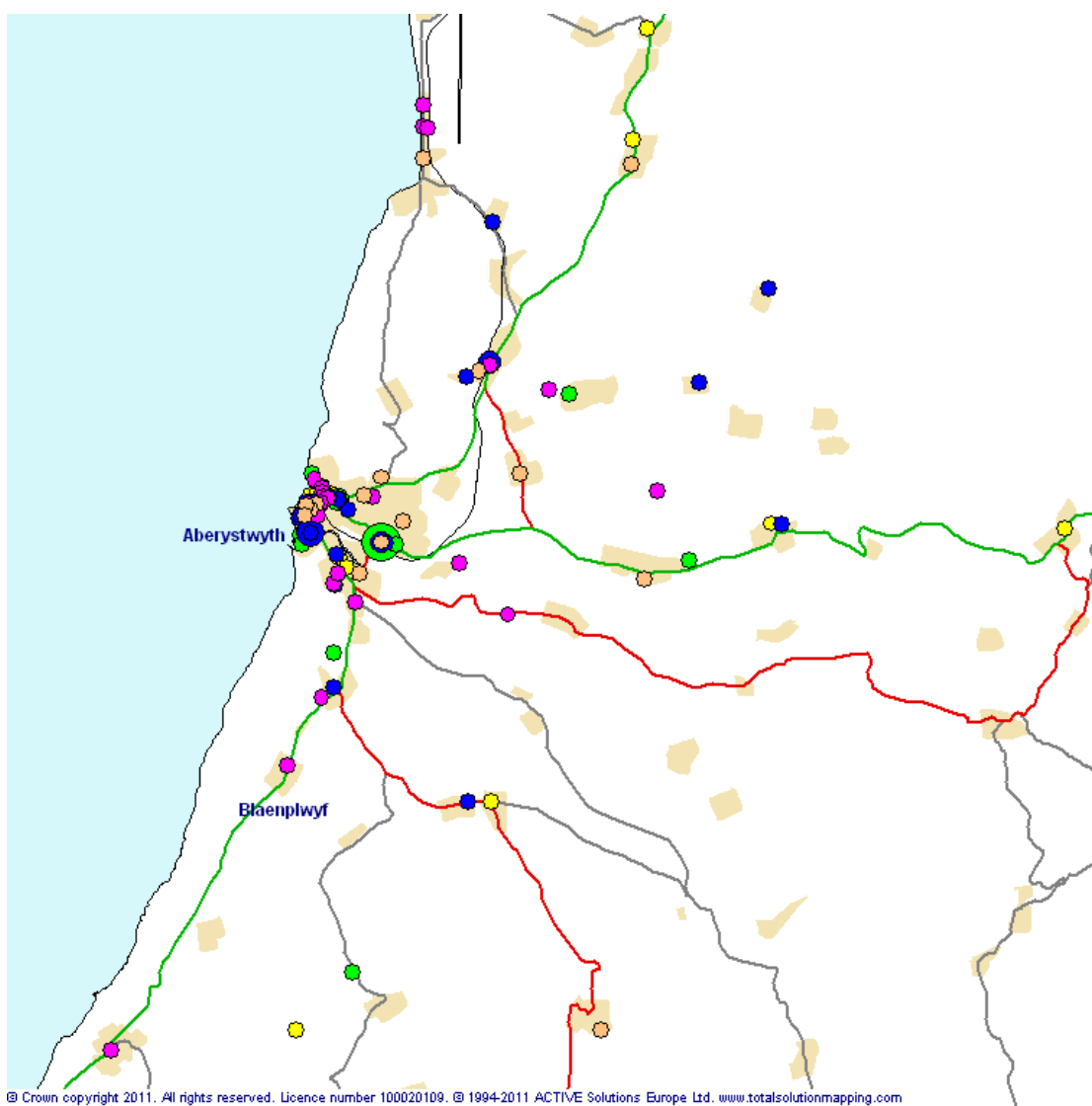
Incident Information – Accidental Dwelling Fires and Rescues, Casualties and Fatalities

The definition for the type of property recorded as dwelling is as follows:

- House of multiple occupancy
- Living accommodation (private, local authority & housing association)
- Sheltered Housing

The following map shows the number and location of accidental dwelling fires within Aberystwyth station ground over the last five years. Of the 152 fires, only 127 dwellings were known to have smoke alarms.

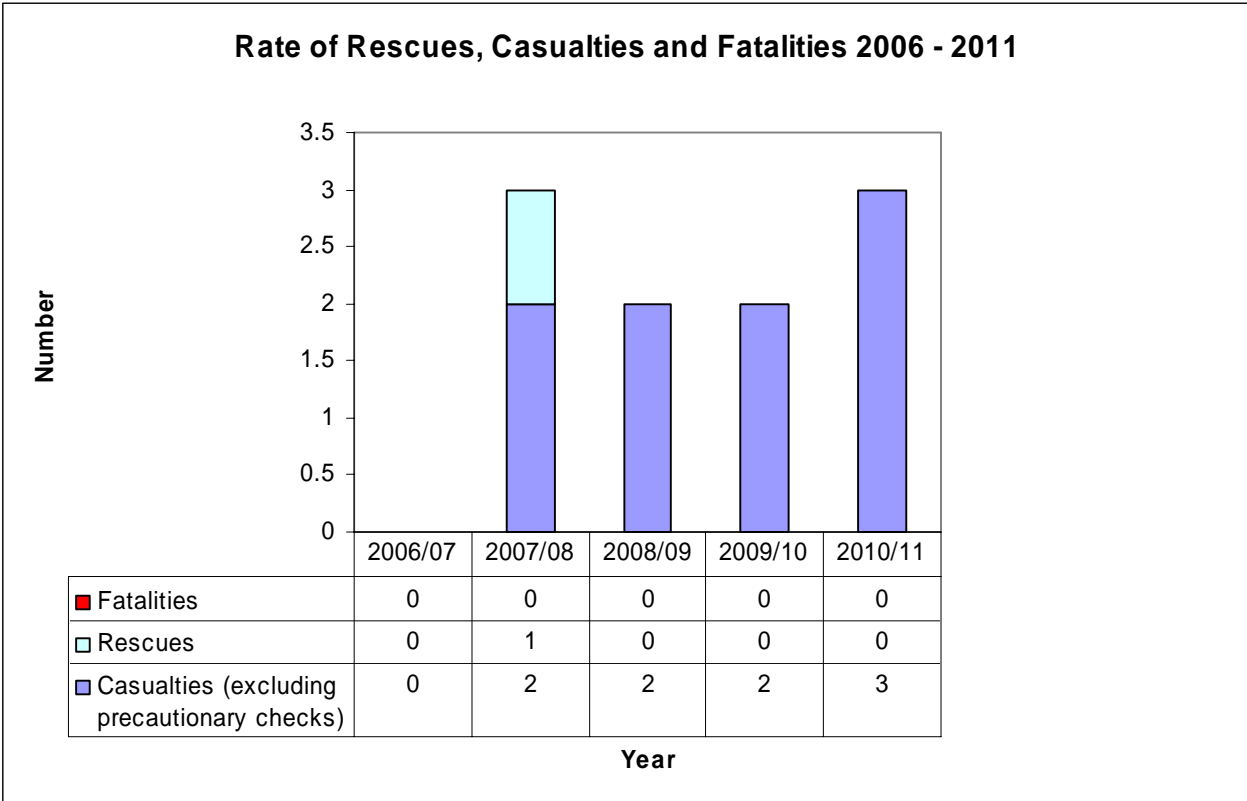
Accidental Dwelling Fires within Aberystwyth Station Ground 01.04.06 – 31.03.11



© Crown copyright 2011. All rights reserved. Licence number 100020109. © 1994-2011 ACTIVE Solutions Europe Ltd. www.totalsolutionmapping.com
(Source: PC stats)

Key	Count	Description
	36	01/04/2006-31/03/2007
	41	01/04/2007-31/03/2008
	36	01/04/2008-31/03/2009
	24	01/04/2009-31/03/2010
	15	01/04/2010-31/03/2011
	152	Total

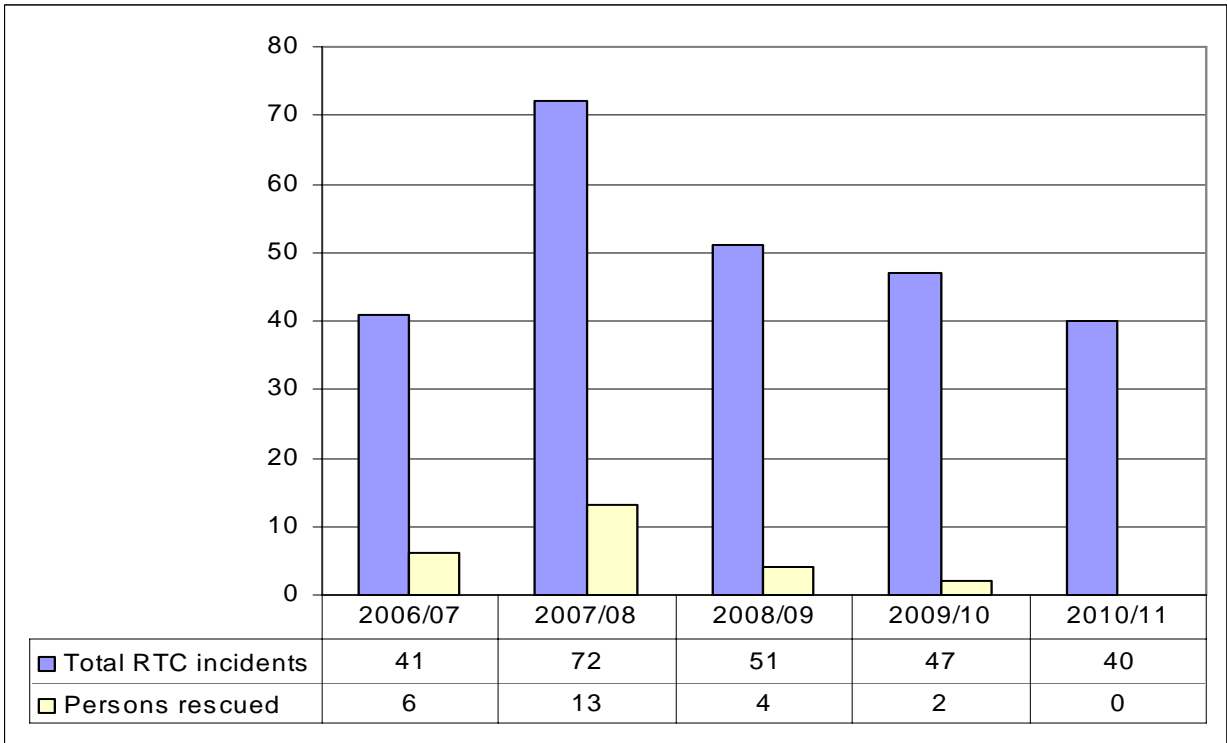
The graph below compares the rate of rescues, casualties and fatalities for accidental dwelling fires within Aberystwyth station ground. The figures are based on data from the last 5 years.



(Source: PC stats)

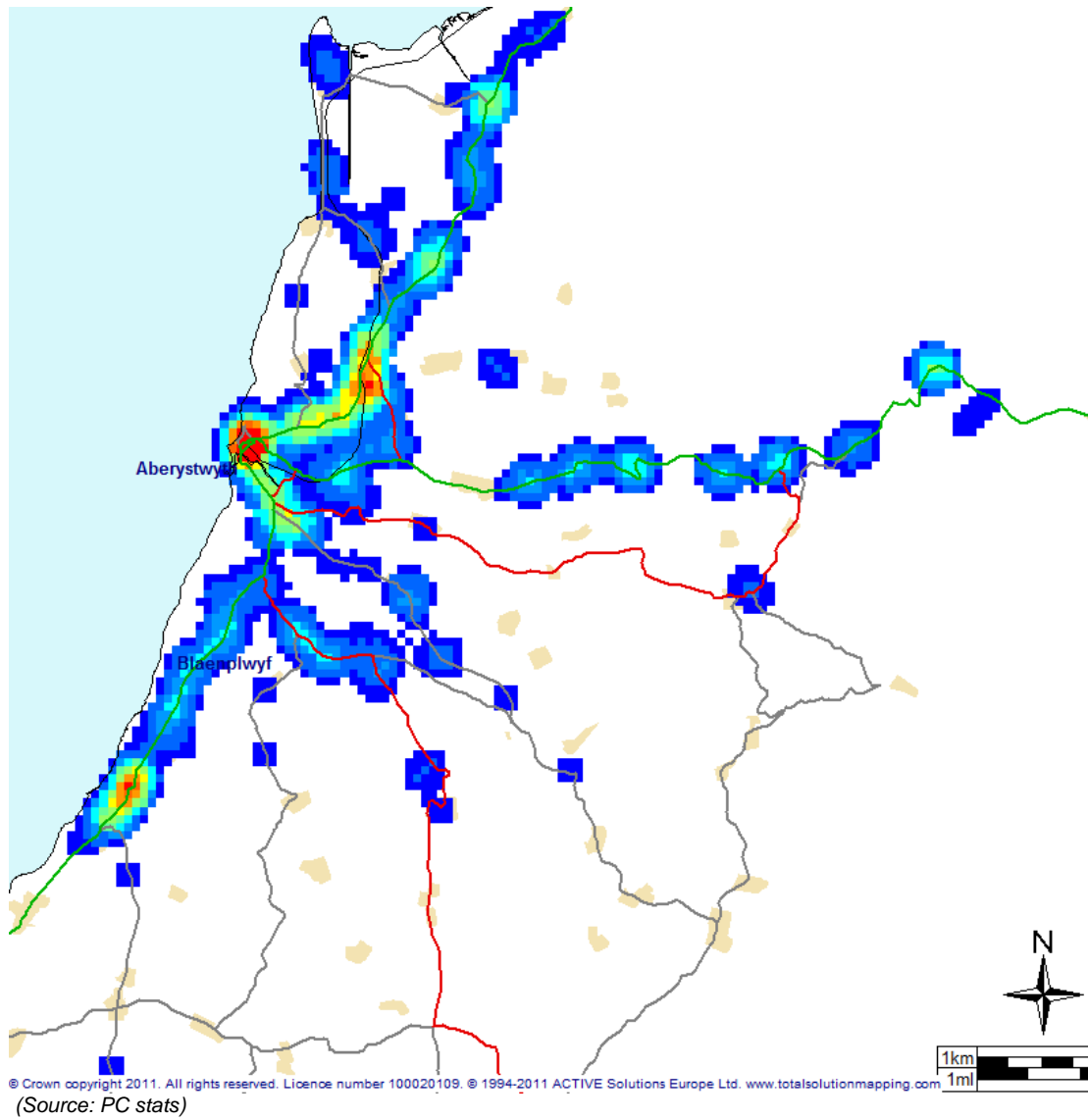
Further incident information – RTC incidents

The graph below shows the trend in Road Traffic Collision (RTC) incidents over the last five fiscal years. We are working with our partners and have introduced RTC reduction initiatives in order to drive down the number of incidents within the Station Ground.



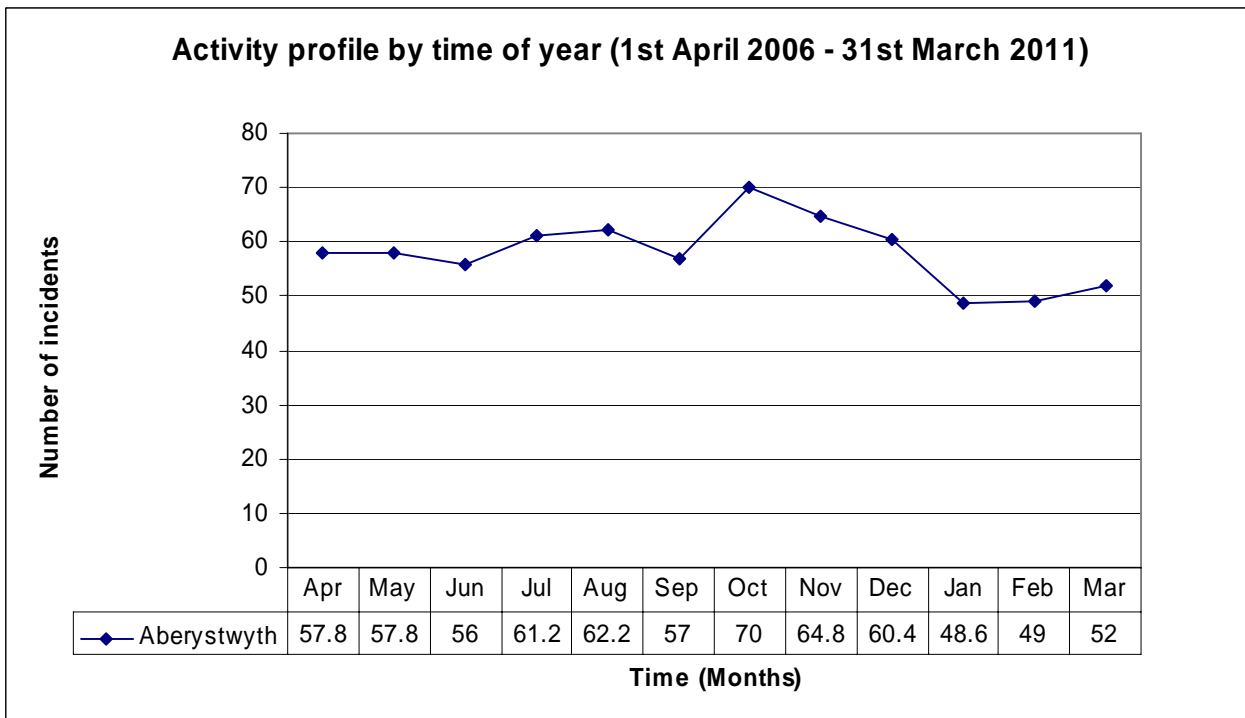
(Source: PC stats)

RTC Hotspots for Aberystwyth Station Ground 01/04/06 – 31/03/11



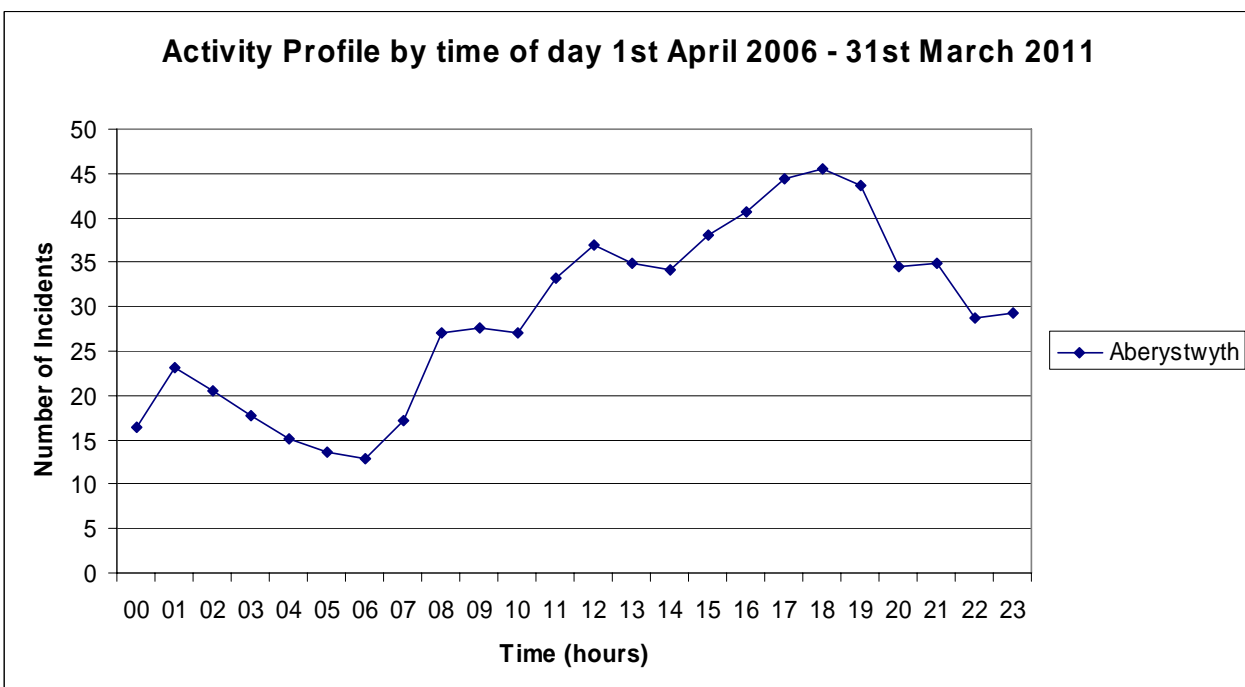
Key	Number of incidents (per 250 metres)
Blue	1
Light Blue	2
Medium Blue	3
Cyan	4
Light Green	5
Green	6
Yellow-Green	7
Yellow	8
Orange	9
Red	10 and over

The following graph shows the average number of incidents for the station by time of year, for the last five years. Many incidents are affected by the weather, for example dry spells can mean an increase in the number of grass fires and significant rainfall can lead to flooding incidents, and this is reflected in the seasonal activity profile.



(Source: PC stats)

This analysis gives a clear picture of the time of day that activities occur. The risk is generally higher when people are going about their work or cooking and reduces overnight.



(Source: PC stats)

Explanation of Terms

Primary fire - A fire involving property of value e.g. houses, commercial premises, farm buildings, vehicles etc.

Dwelling fire - A property that is also a place of residence.

Secondary fire - Fires confined to derelict buildings, grass, refuse, derelict vehicles etc.

Chimney Fire - A chimney fire is defined within these figures as a fire that was confined to the chimney and did not spread to the house.

Special Services - Fire and Rescue Services are also required to attend a variety of non-fire related incidents. Examples of these include road traffic collisions, collapsed structures, chemical spillages and flooding etc.

Road Traffic Collision (RTC) - Fire and Rescue Services attend road traffic collisions where it is known or believed that persons may be trapped or where they are required to make the area safe e.g. fuel spillage.

False alarms - are split into 3 categories:

False alarm deliberate – this incident classification is used for hoax or malicious fire calls where the fire service attend to a report of fire but on investigation it is found that the call was a hoax.

False alarm good intent – where a call is made to the fire service with good intent but on inspection it is found that there is no need for action e.g. controlled burning.

False alarm mechanical – where an alarm call has been received and upon attendance it is found to be a false alarm due to system fault or unsuitable equipment etc.

Co Responders - Where specially trained fire service staff attend to injured or seriously ill patients in support of the ambulance service.

Incident

An emergency occurrence where the fire service makes an attendance.

Station Ground

The area where that fire station provides the nearest attendance in the event of an emergency.