

**Risk Profile**  
**Mid & West Wales Fire Service**

**Station 23 – New Quay**



**Contact Details:**

**Station Manager: Arwel James**

**Address:**  
New Quay Fire Station  
16 Cwm Ifor  
NEW QUAY  
Ceredigion  
SA45 9QW

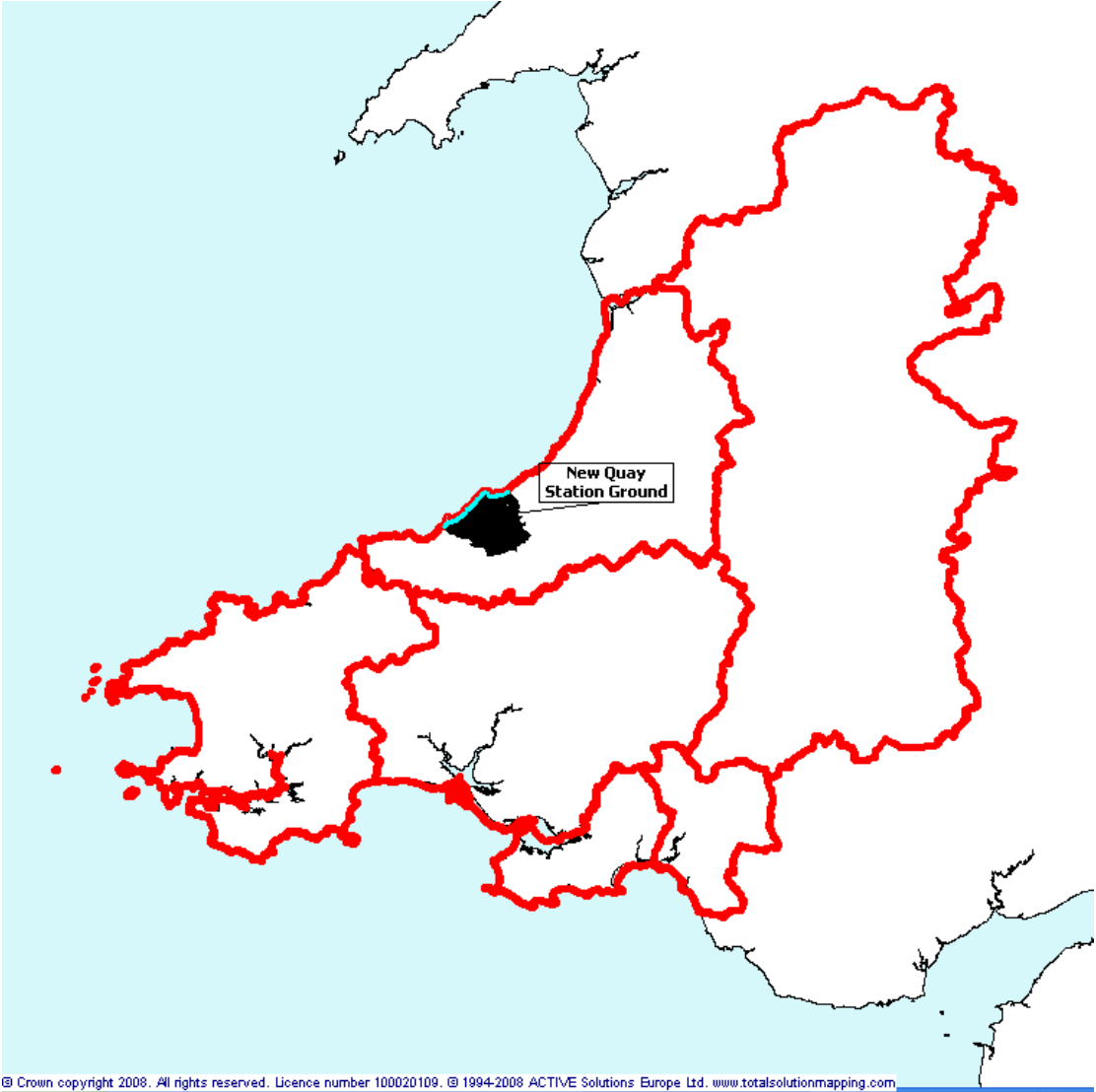
**Telephone:**0370 6060699  
**Email:** [mail@mawwfire.gov.uk](mailto:mail@mawwfire.gov.uk)

**ALWAYS RING 999 IN AN EMERGENCY**

The following report contains information about New Quay Fire Station. This information will assist in identifying areas where future activity should be focused and also give an overview of the area to those not familiar with it. This will be updated each year.

**General Information about the area**

Map of Mid and West Wales Fire and Rescue Service. New Quay fire station ground is highlighted.



Statistics New Quay station area:-

Population	Population of Ceredigion	Population of Mid and West Wales Fire and Rescue Service
5,284	76,900	875,900

*Figures based on 2010 population estimates (www.stats-wales.gov.uk)*

## STATION OVERVIEW

### CREWING ARRANGEMENTS

New Quay Fire Station is staffed using a Retained Duty System. This means that the station is crewed by part-time personnel covering the day and evening using an alerter system.

### APPLIANCE INFORMATION

- New Quay Fire Station has 1 fire engine/Water Ladder – this is a general-purpose fire fighting appliance.

### LOCATION

New Quay Fire Station was built in the 1960's. The station covers New Quay Town and the surrounding communities, but the remaining station area is predominantly rural.

### RISKS

The main risk for New Quay and its surrounding communities are the A and B road networks leading to Carmarthen, Aberystwyth and Cardigan. There is also a shellfish processing plant and several seasonally populated holiday parks. New Quay and its surrounding communities are predominately of average risk for domestic housing with a few areas of above average risk. New Quay is also a tourist destination with a number of public houses and hotels.

### KEY WORK ACTIVITY AREAS FOR NEW QUAY FIRE STATION:

1. Road Traffic Collision Reduction.
2. Targeting of Youth Groups to deliver Fire Awareness.
3. Reduction in unwanted Fire Calls.
4. Gathering Operational Information of surrounding risks.
5. Undertaking Home Fire Safety Checks (HFSCs) to provide safety advice to householders.

### PREVENTION

Risk Areas are targeted with Home Fire Safety Checks. Local firefighters and community safety staff visit homes and provide fire safety advice and, where necessary, will supply and install smoke alarms free of charge. These checks are the cornerstone of the proactive role the Service is now adopting in its drive to reduce the deaths and injuries that are caused by accidental fires.

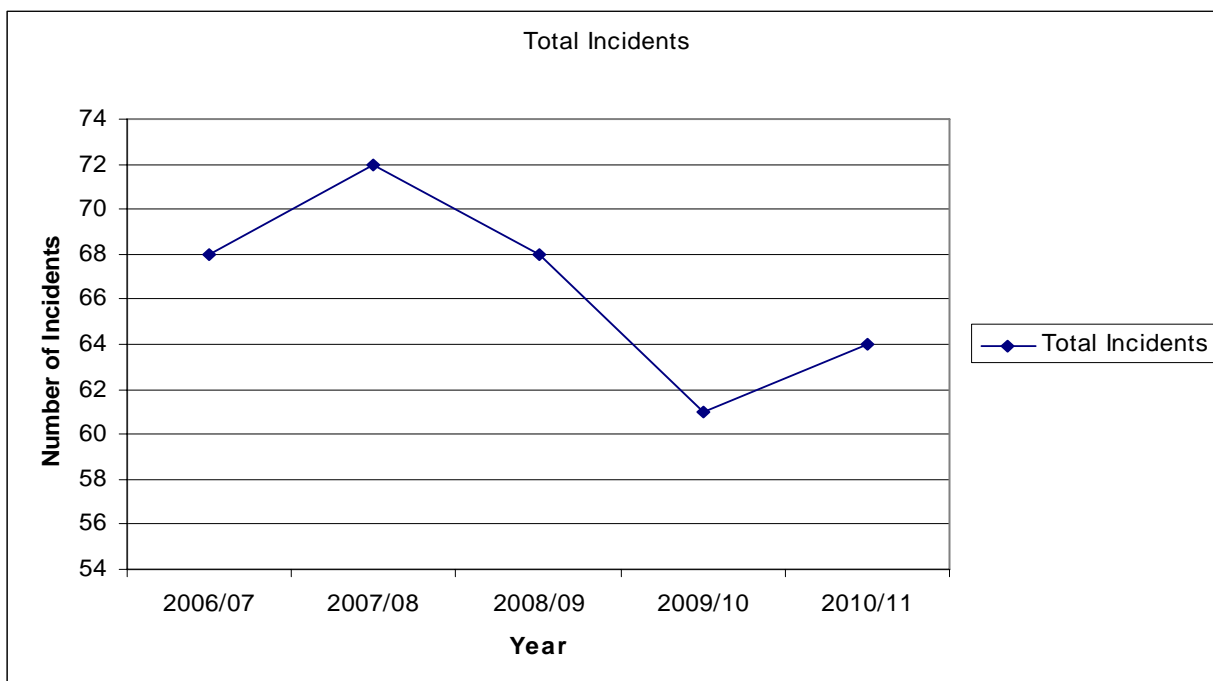
New Quay Fire Station carries out approximately 100 Home Fire Safety Checks annually. Fires in the home are the main cause of fire deaths and injuries. The typical causes of fire in the home include

- Cookers left unattended
- Careless discarding of cigarettes
- Overloaded electrical sockets
- Children playing with matches
- Cooking after drinking alcohol

A home fire safety check takes about an hour to complete and is generally undertaken by two Fire Service representatives. Getting a smoke alarm, regularly testing and maintaining it, as well as planning an escape route in the event of a fire can dramatically decrease the risk of death or serious injury. You can request a home fire safety check for yourself or a dependant relative by contacting the Service on 0800 169 1234 or by sending an e-mail request to your local Fire Service office via an online form from [www.mawwfire.gov.uk/home\\_safety\\_eng/hfsc.asp](http://www.mawwfire.gov.uk/home_safety_eng/hfsc.asp).

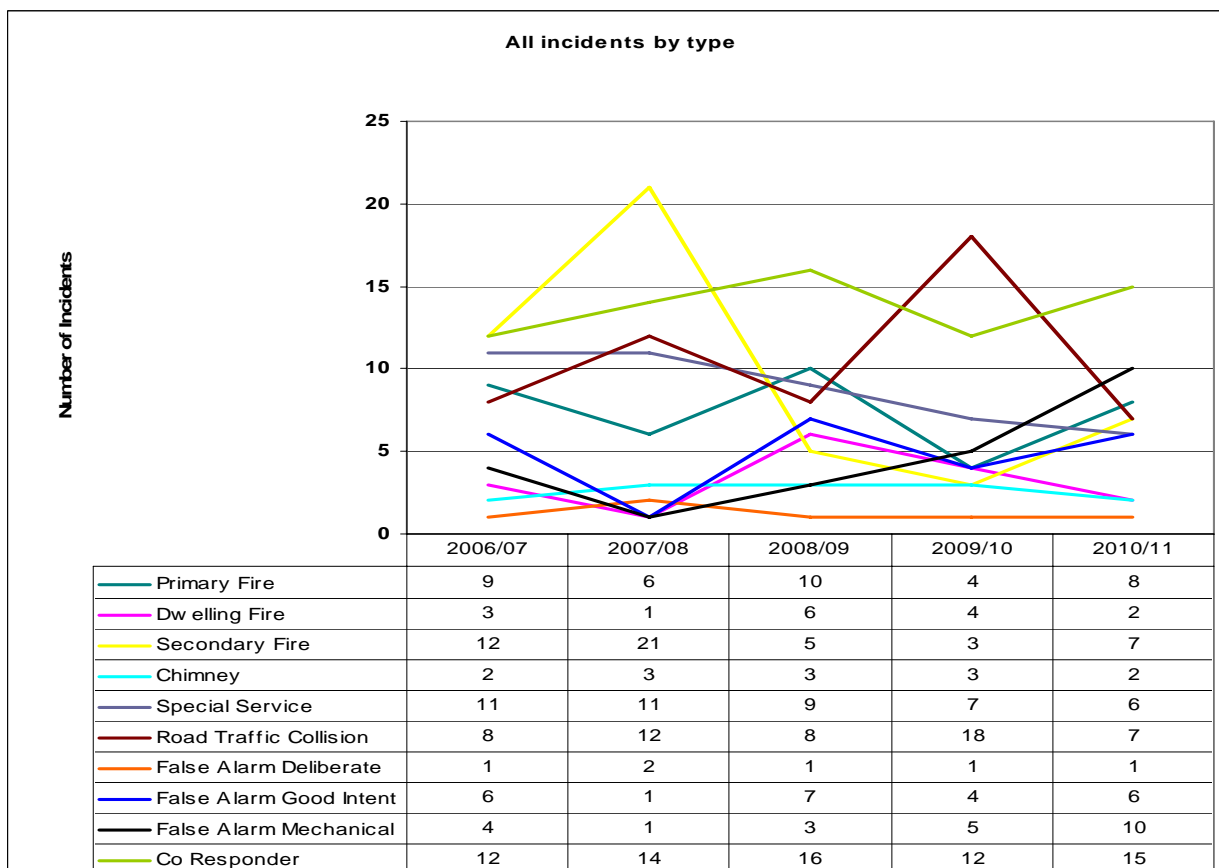
### Specific Details about incidents

The following graph shows the trend in the total number of all incidents within New Quay station ground over the five years (1<sup>st</sup> April 2006 -31<sup>st</sup> March 2011).



(Source: PC stats)

The following line graph shows the trend in different types of incidents\* for the station ground for the last five years (1<sup>st</sup> April 2006 -31<sup>st</sup> March 2011).



(Source: PC stats)

\* see appendix A for incident type definitions  
Last updated:-25/11/2011

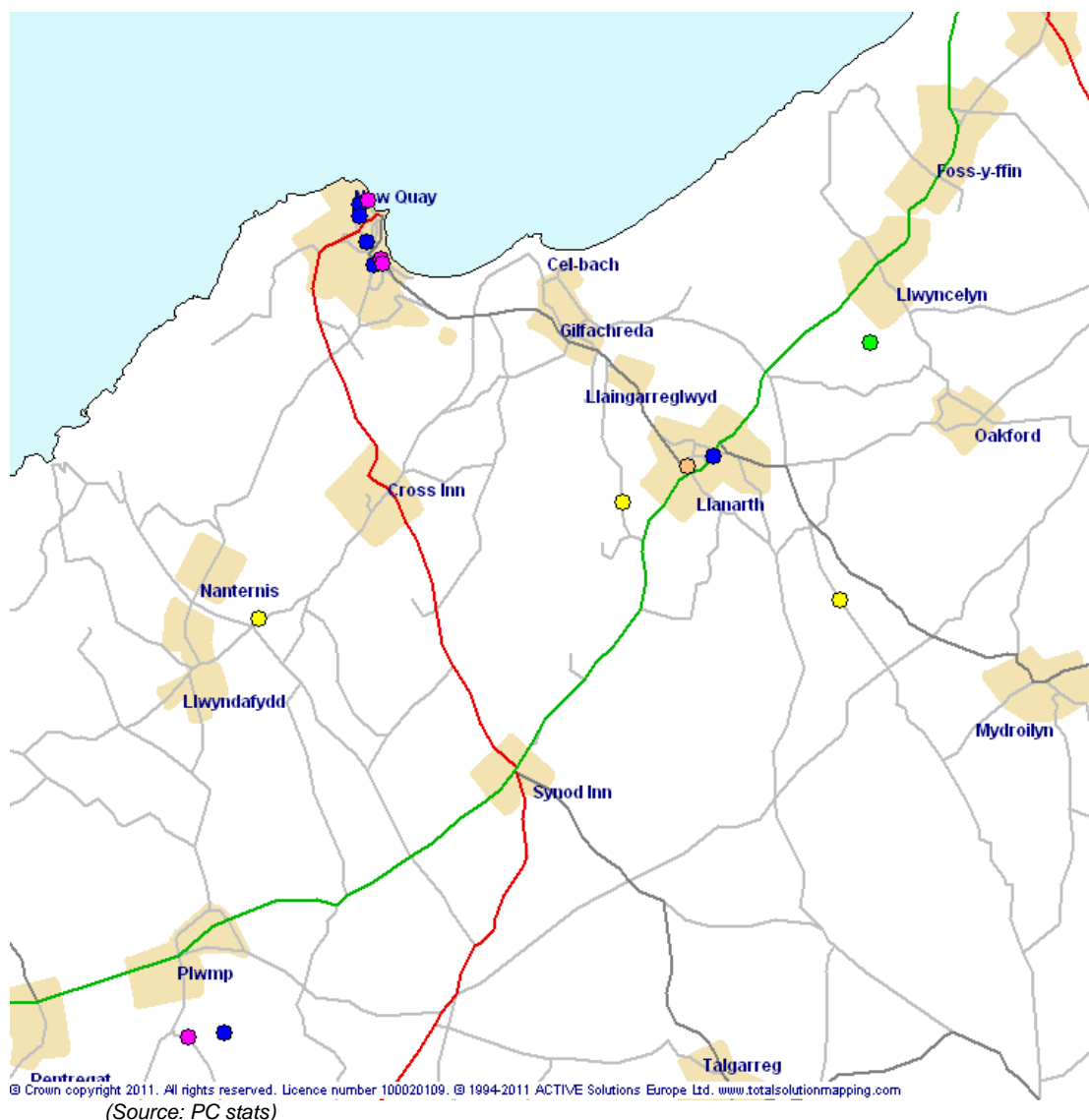
## Incident Information – Accidental Dwelling Fires and Rescues, Casualties and Fatalities

The definition for the type of property recorded as dwelling is as follows:

- House of multiple occupancy
- Living accommodation (private, local authority & housing association)
- Sheltered Housing

The following map shows the number and location of accidental dwelling fires within New Quay station ground over the last five years. Of the 16 fires, only 3 dwellings were known to have smoke alarms.

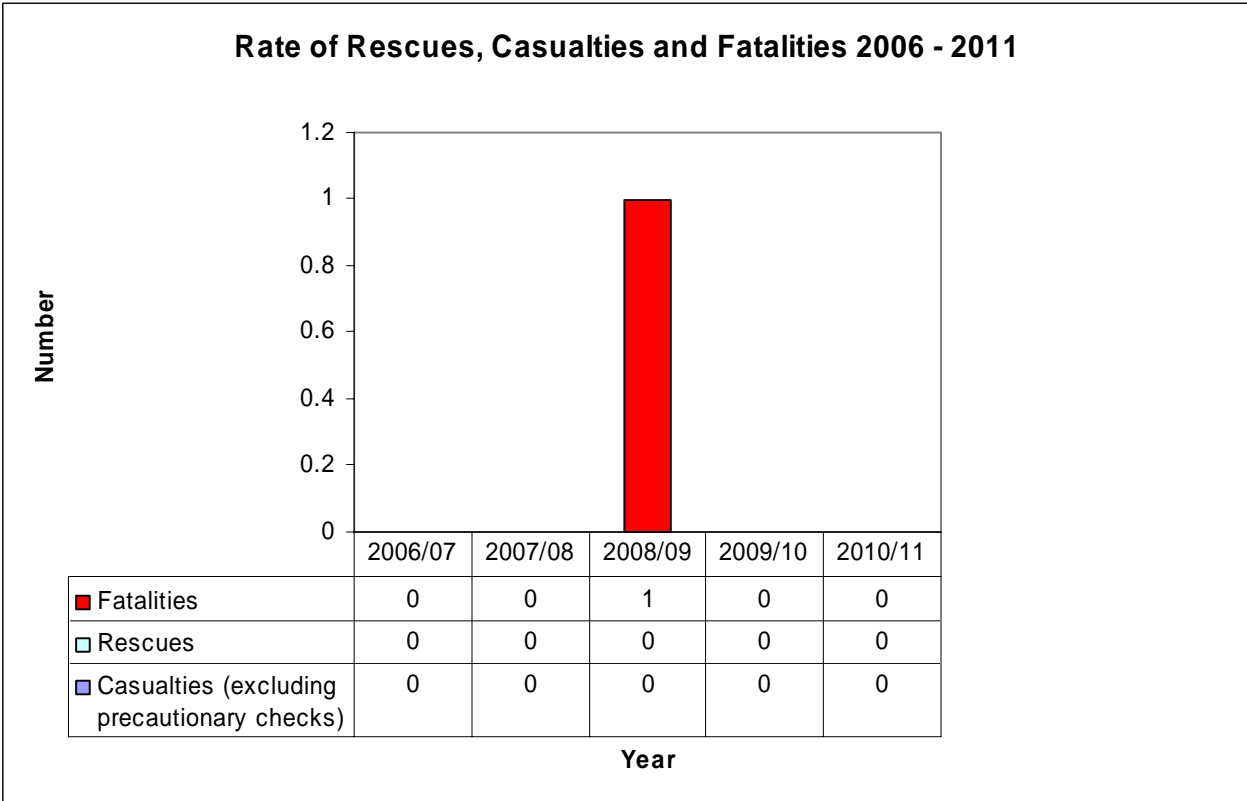
### Accidental Dwelling Fires within New Quay Station Ground 01.04.06 – 31.03.11



Key	Count	Description
	3	01/04/2006-31/03/2007
	1	01/04/2007-31/03/2008
	6	01/04/2008-31/03/2009
	4	01/04/2009-31/03/2010
	2	01/04/2010-31/03/2011
	16	Total

Last updated:-25/11/2011

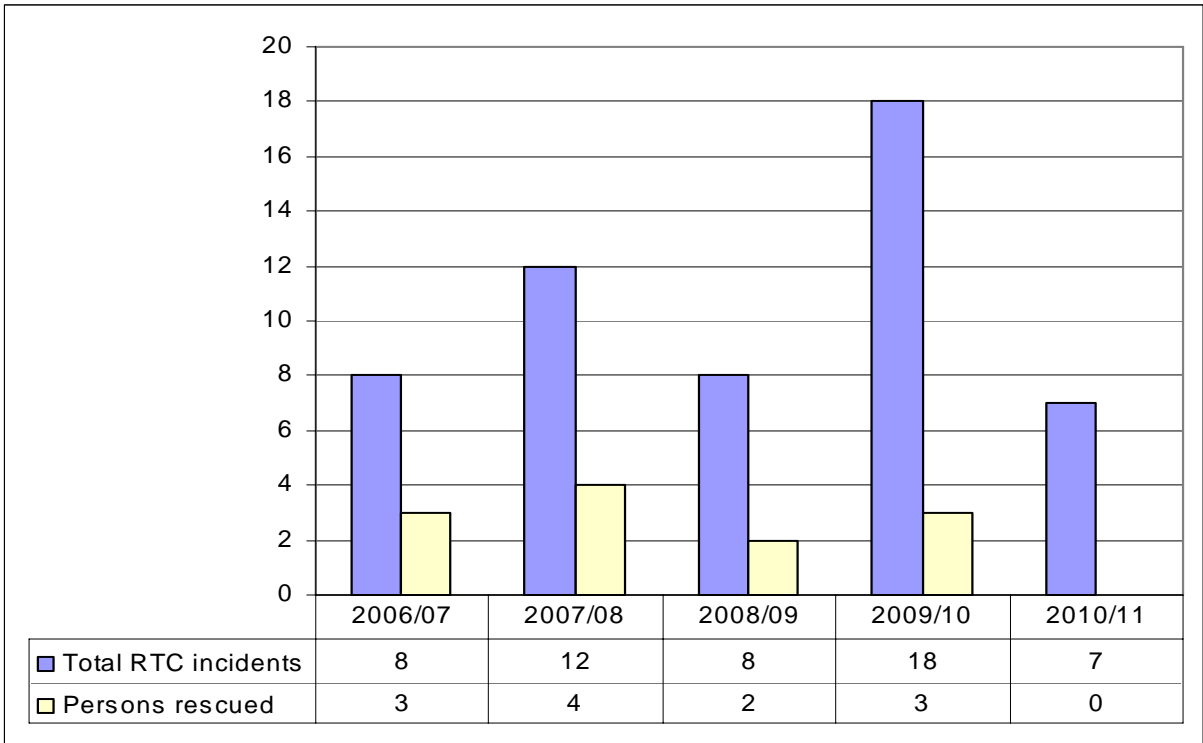
The graph below compares the rate of rescues, casualties and fatalities for accidental dwelling fires within New Quay station ground. The figures are based on data from the last 5 years.



(Source: PC stats)

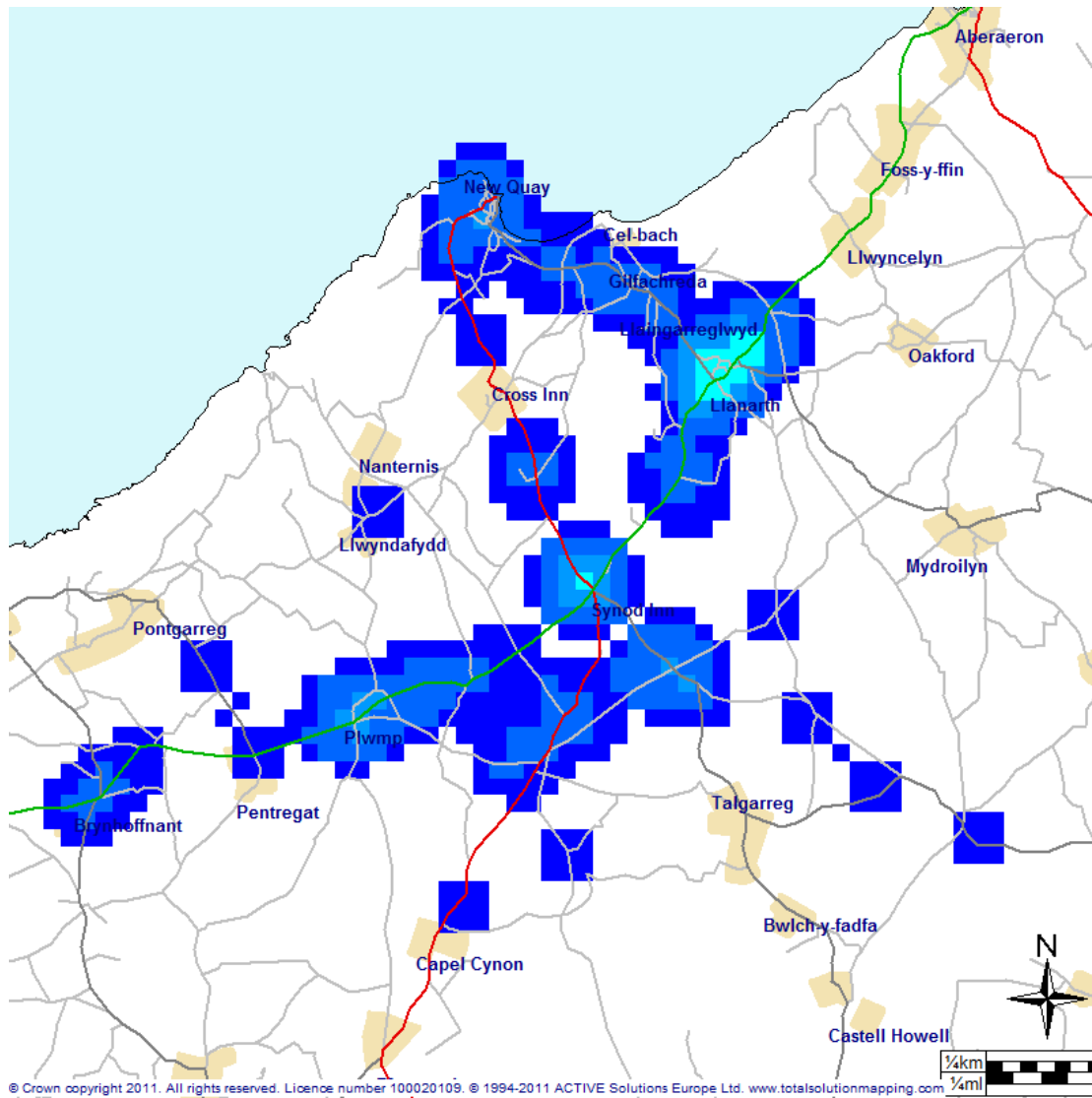
**Further incident information – RTC incidents**

The graph below shows the trend in Road Traffic Collision (RTC) incidents over the last five fiscal years. We are working with our partners and have introduced RTC reduction initiatives in order to drive down the number of incidents within the Station Ground.



(Source: PC stats)

RTC Hotspots for New Quay Station Ground 01/04/06 – 31/03/11

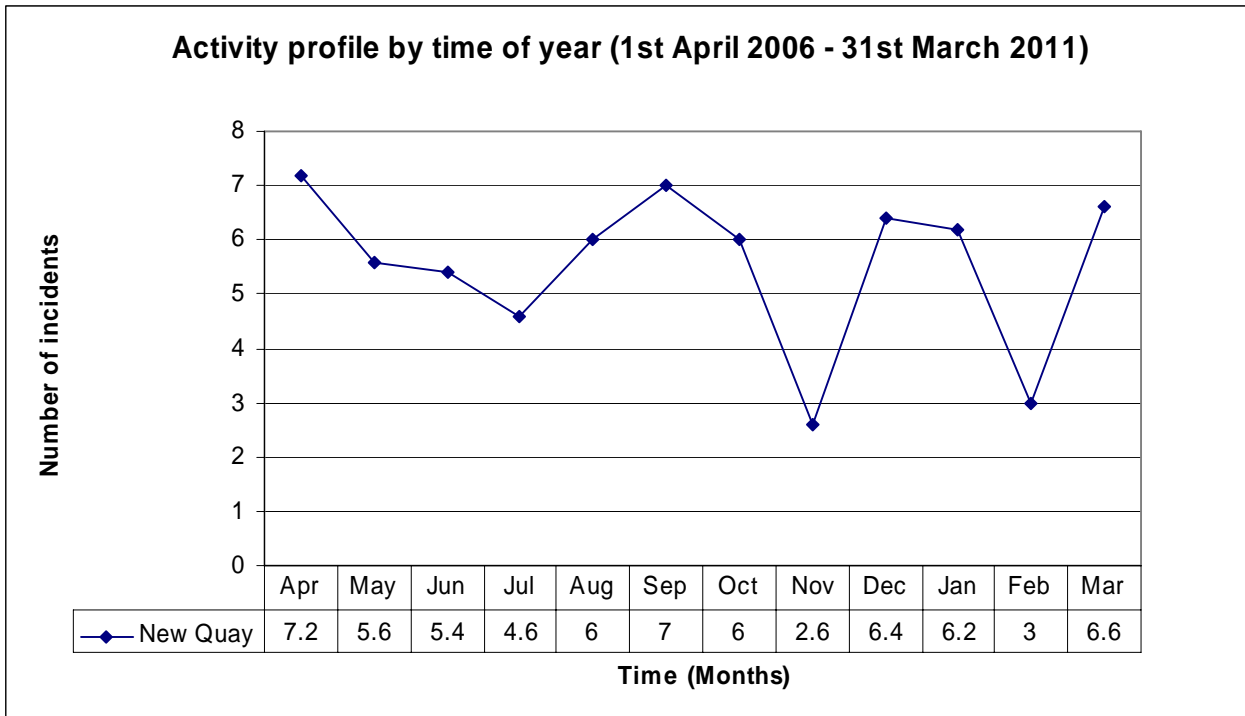


© Crown copyright 2011. All rights reserved. Licence number 100020109. © 1994-2011 ACTIVE Solutions Europe Ltd. www.totalsolutionmapping.com

(Source: PC stats)

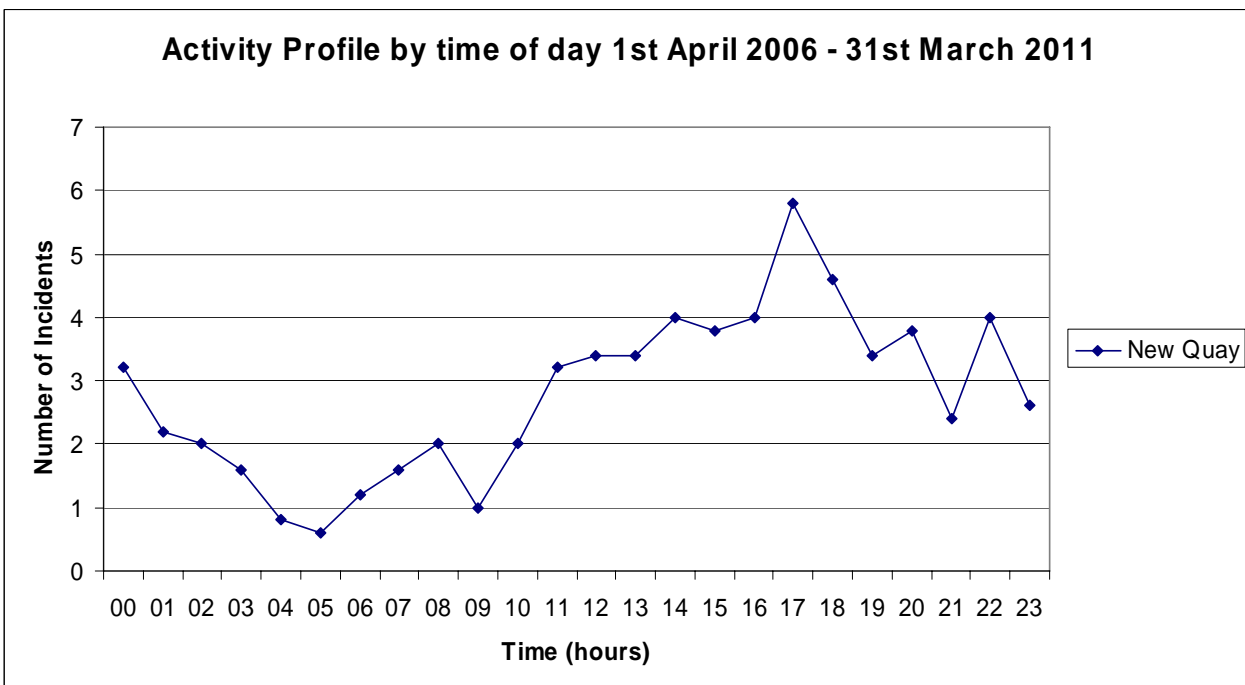
Key	Number of incidents (per 250 metres)
Dark Blue	1
Blue	2
Light Blue	3
Cyan	4
Light Green	5
Green	6
Yellow-Green	7
Yellow	8
Orange	9
Red	10 and over

The following graph shows the average number of incidents for the station by time of year, for the last five years. Many incidents are affected by the weather, for example dry spells can mean an increase in the number of grass fires and significant rainfall can lead to flooding incidents, and this is reflected in the seasonal activity profile.



(Source: PC stats)

This analysis gives a clear picture of the time of day that activities occur. The risk is generally higher when people are going about their work or cooking and reduces overnight.



(Source: PC stats)

## Explanation of Terms

**Primary fire** - A fire involving property of value e.g. houses, commercial premises, farm buildings, vehicles etc.

**Dwelling fire** - A property that is also a place of residence.

**Secondary fire** - Fires confined to derelict buildings, grass, refuse, derelict vehicles etc.

**Chimney Fire** - A chimney fire is defined within these figures as a fire that was confined to the chimney and did not spread to the house.

**Special Services** - Fire and Rescue Services are also required to attend a variety of non-fire related incidents. Examples of these include road traffic collisions, collapsed structures, chemical spillages and flooding etc.

**Road Traffic Collision (RTC)** - Fire and Rescue Services attend road traffic collisions where it is known or believed that persons may be trapped or where they are required to make the area safe e.g. fuel spillage.

**False alarms** - are split into 3 categories:

**False alarm deliberate** – this incident classification is used for hoax or malicious fire calls where the fire service attend to a report of fire but on investigation it is found that the call was a hoax.

**False alarm good intent** – where a call is made to the fire service with good intent but on inspection it is found that there is no need for action e.g. controlled burning.

**False alarm mechanical** – where an alarm call has been received and upon attendance it is found to be a false alarm due to system fault or unsuitable equipment etc.

**Co Responders** - Where specially trained fire service staff attend to injured or seriously ill patients in support of the ambulance service.

### Incident

An emergency occurrence where the fire service makes an attendance.

### Station Ground

The area where that fire station provides the nearest attendance in the event of an emergency.